

Yad HaNadiv Initiative for The Sorek River Rehabilitation

Presentation to Members of the Board 7.6.2020


URBANOF
STUDIO
ARCHITECTS
LANDSCAPE ARCHITECTS



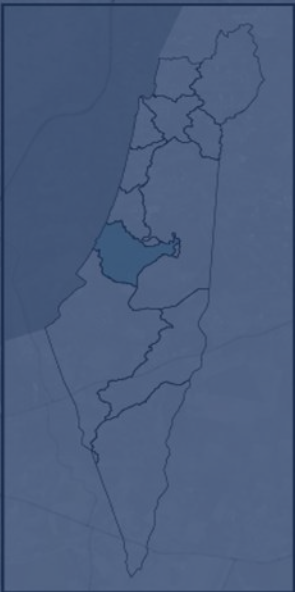
רשות נחל וניקוז
שורק לכיש

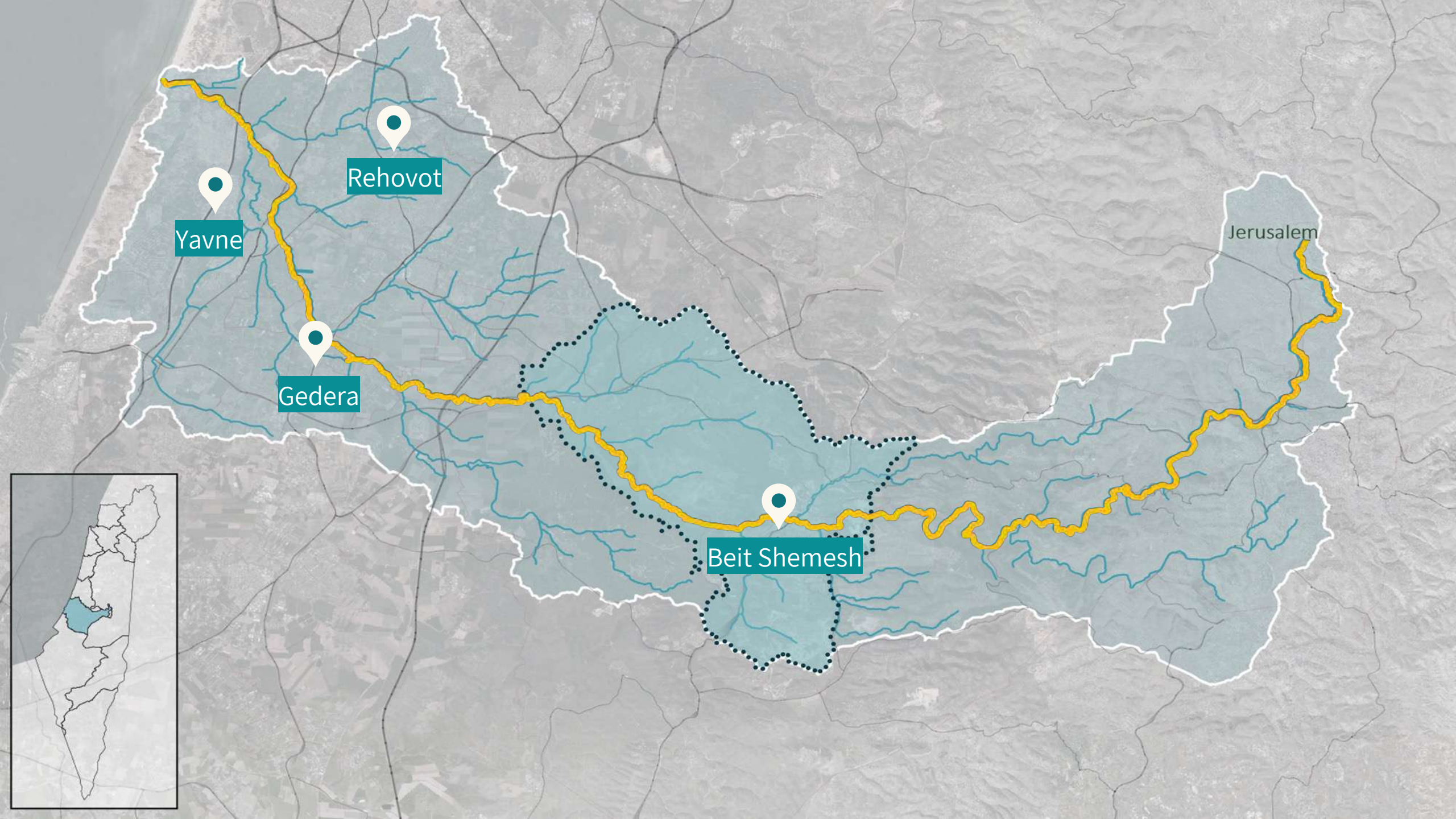


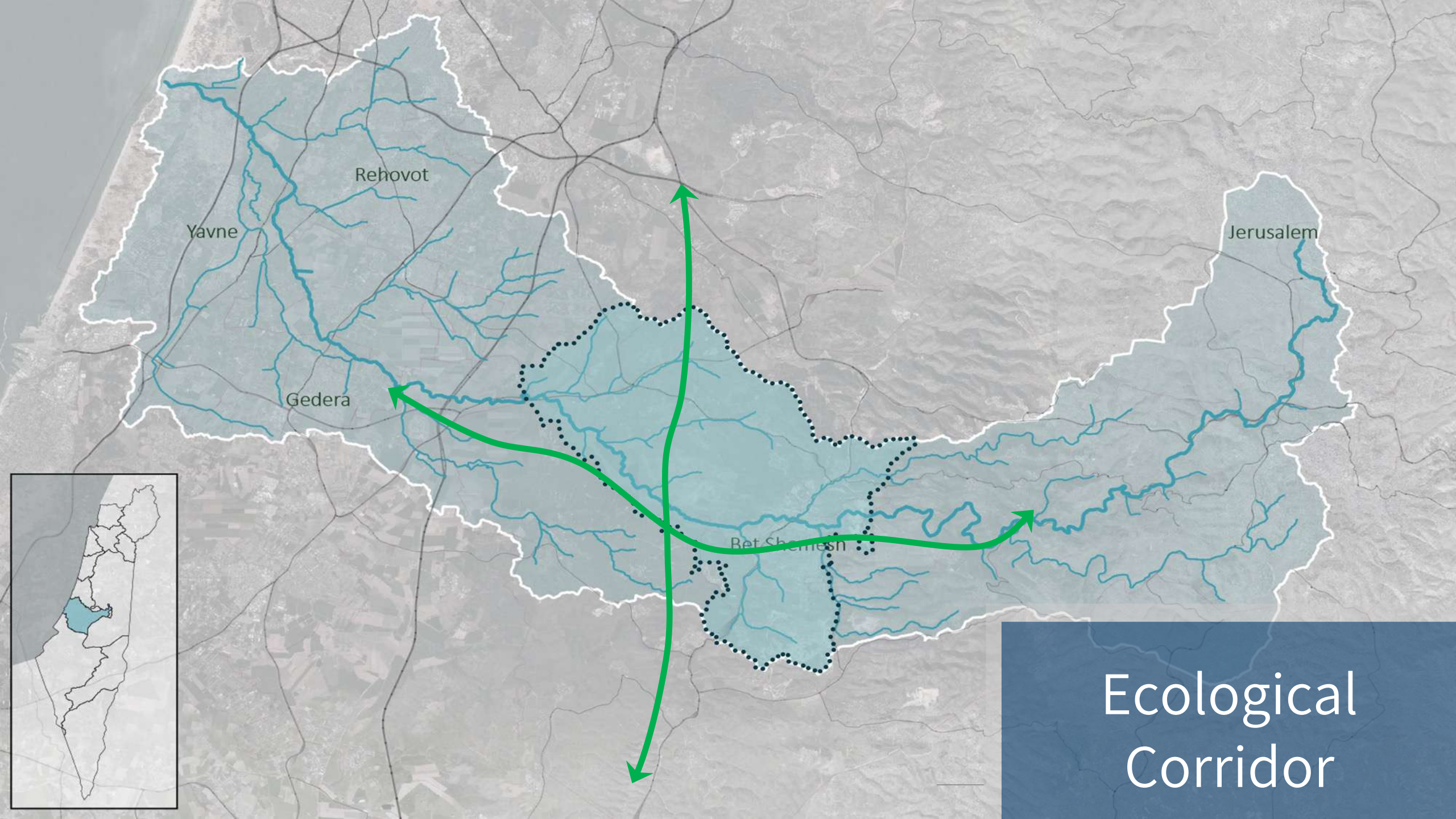
A New Vision for
the Sorek Basin

A map of the Sorek River watershed in Israel, showing the river's course from the north to the south. The watershed is outlined with a dotted line. Major cities labeled include Rehovot, Yavne, Gederot, Jerusalem, and Bet Shemesh. The background is a topographic map with contour lines and a blue overlay for the river and watershed.

The Sorek River is the largest, richest
and most important natural resource
in the heart of Israel







A Region of Conflict

Beit Shemesh



City



Religious



Industrial



Religions



Mate Yehuda



Rural



Secular



Agriculture



A Basin of Opportunities

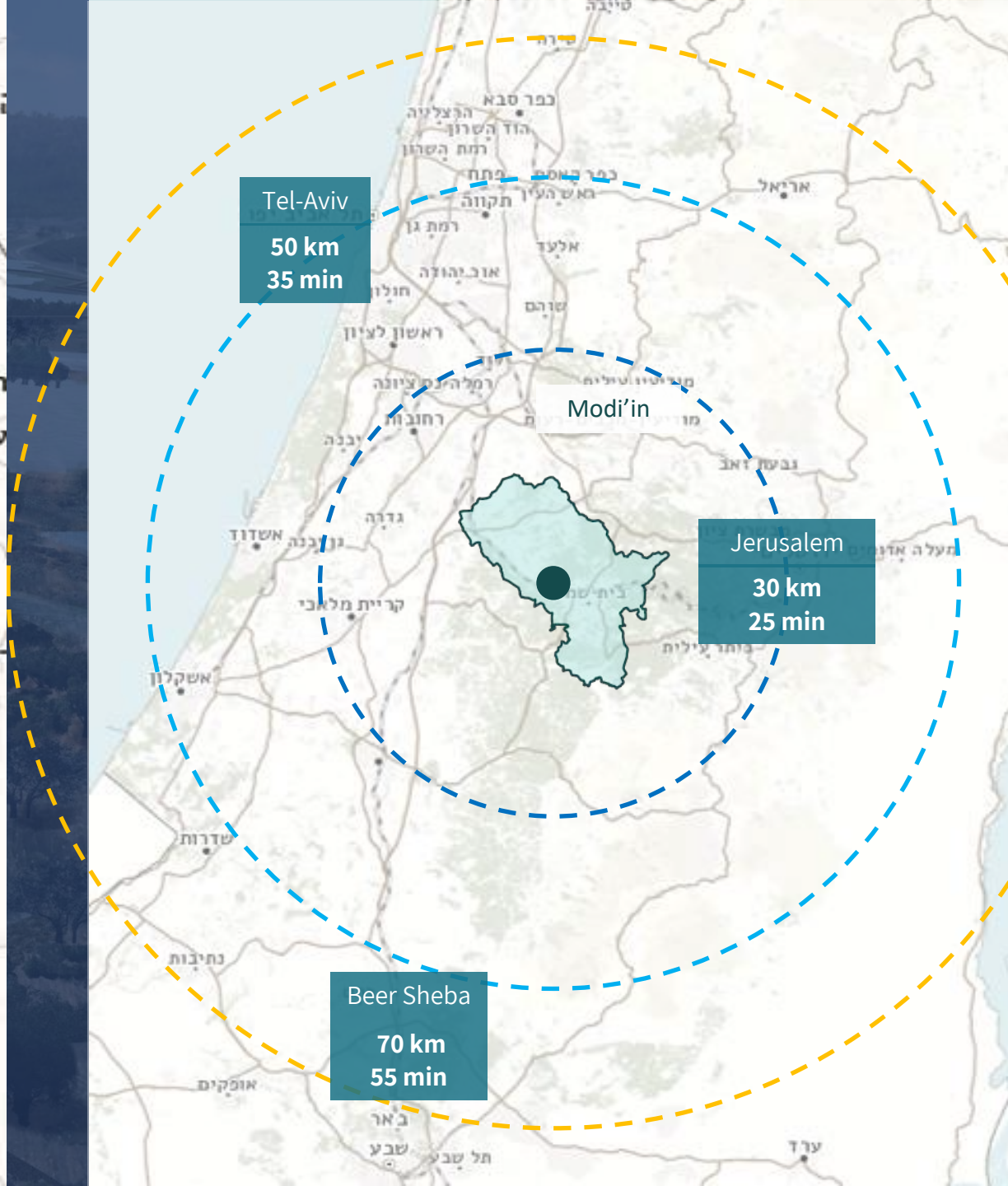
“It is easy to find god
when you look at nature”

Neima Marcus, Beit Shemesh

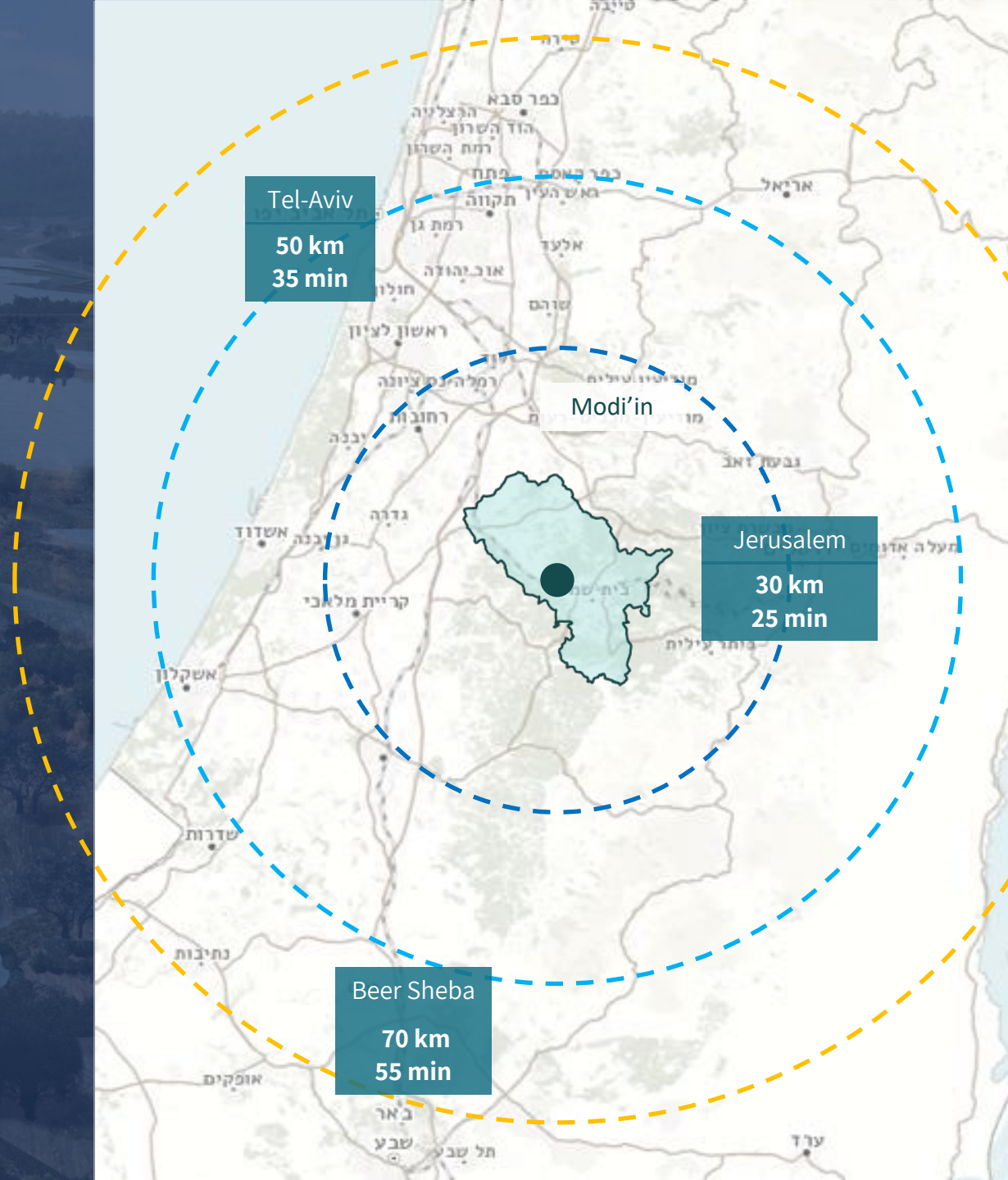


An aerial photograph of a vast wetland landscape. A large body of water, possibly a bay or estuary, dominates the left and center of the frame. The water is a deep blue-grey color. To the right of the water, there are extensive marshlands with dense green vegetation and scattered trees. In the upper right corner, a large bird, likely a frigatebird, is shown in flight, its wings spread wide. The sky is overcast with grey clouds. In the background, a distant shoreline with some buildings and hills is visible. The overall tone of the image is somber and atmospheric.

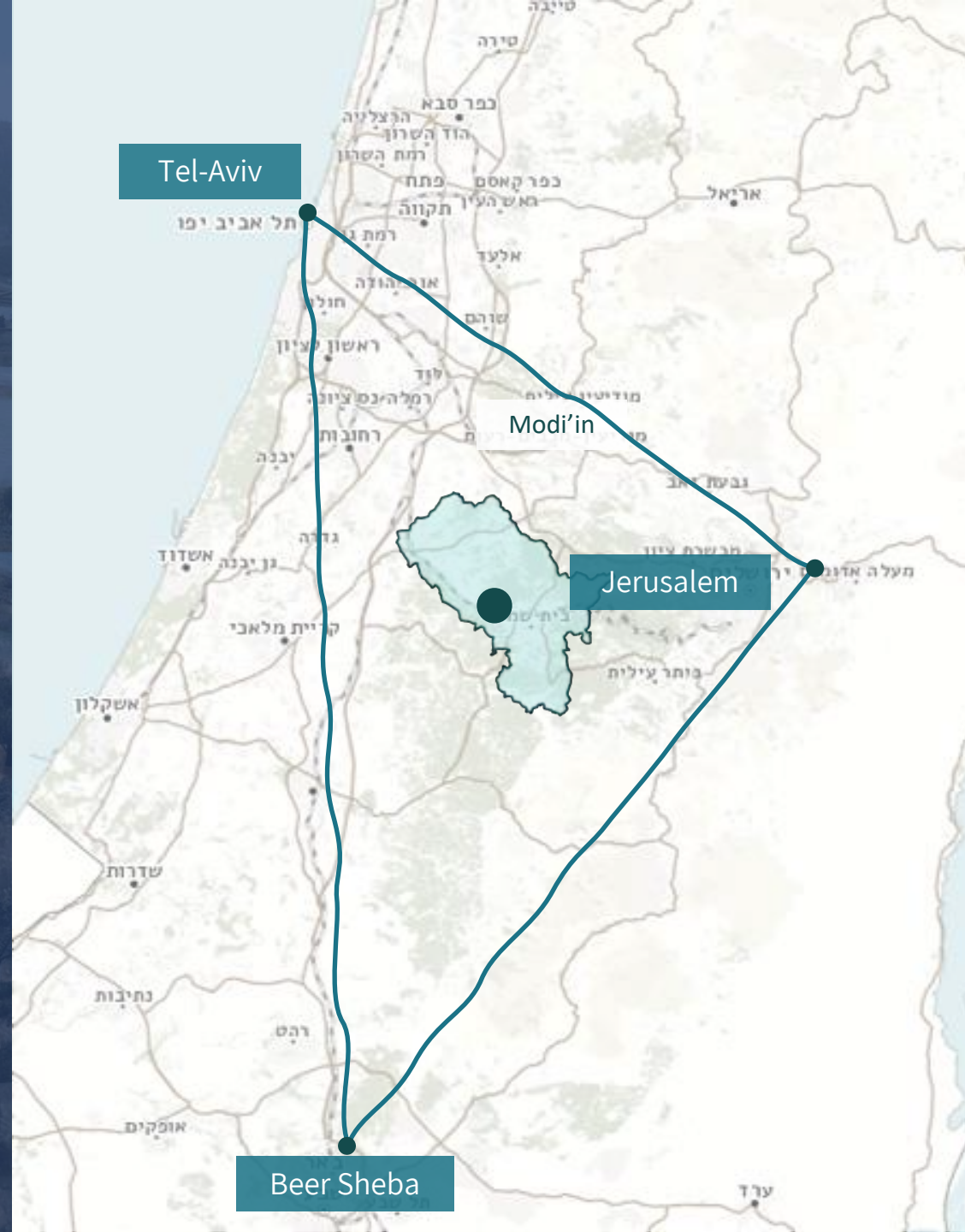
Historic Opportunity to make a
significant transformation on a
national level



More than
60%
of Israel's
population
Live within a
one hour drive
from the site









“ If you pull
this off, you
will change
the geography
of Israel ”













Beit
Shemesh

 **2020**
130,000

 **2030**
250,000

 **2050**
350,000

3.0 million sqm development
4600 housing units

THREATS



POWER PLANT



INDUSTRIAL AREA

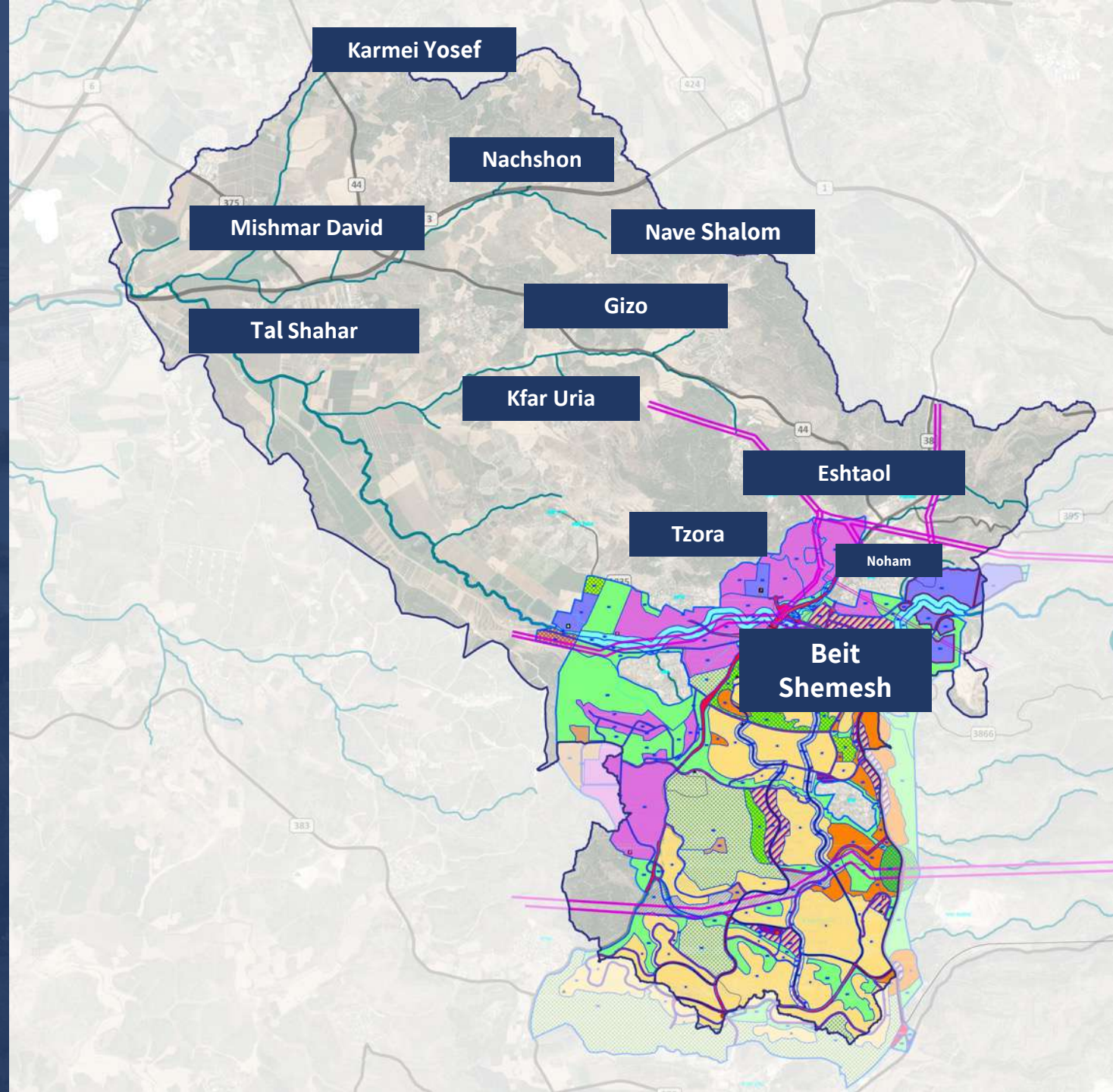


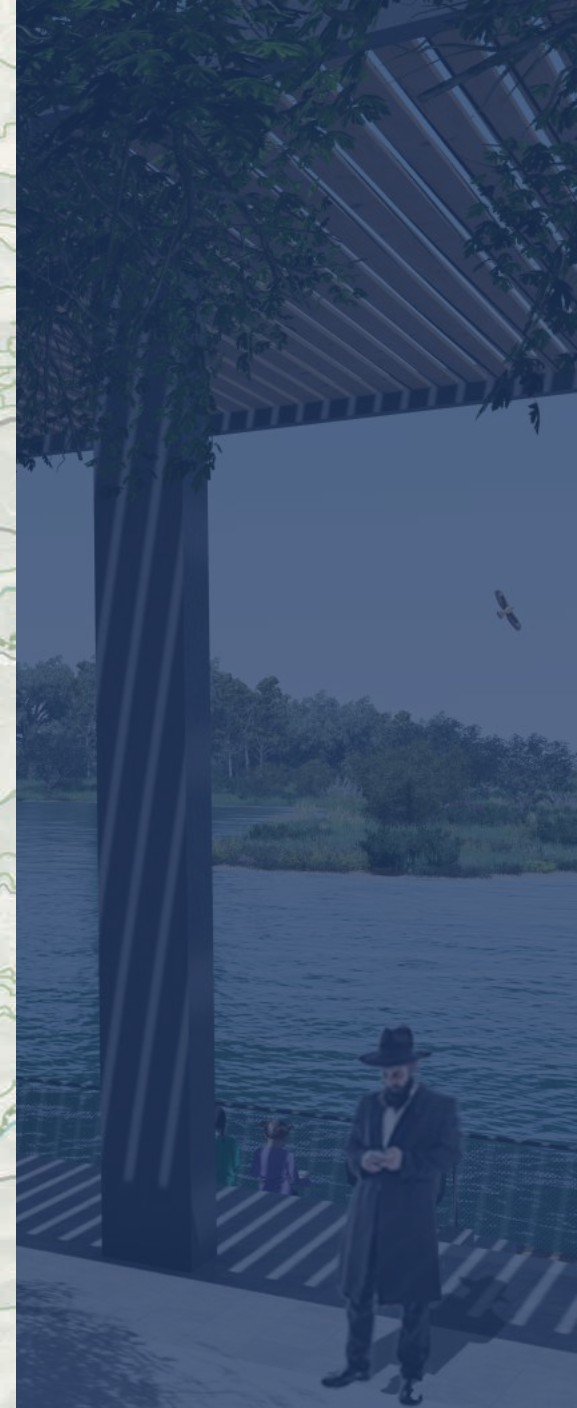
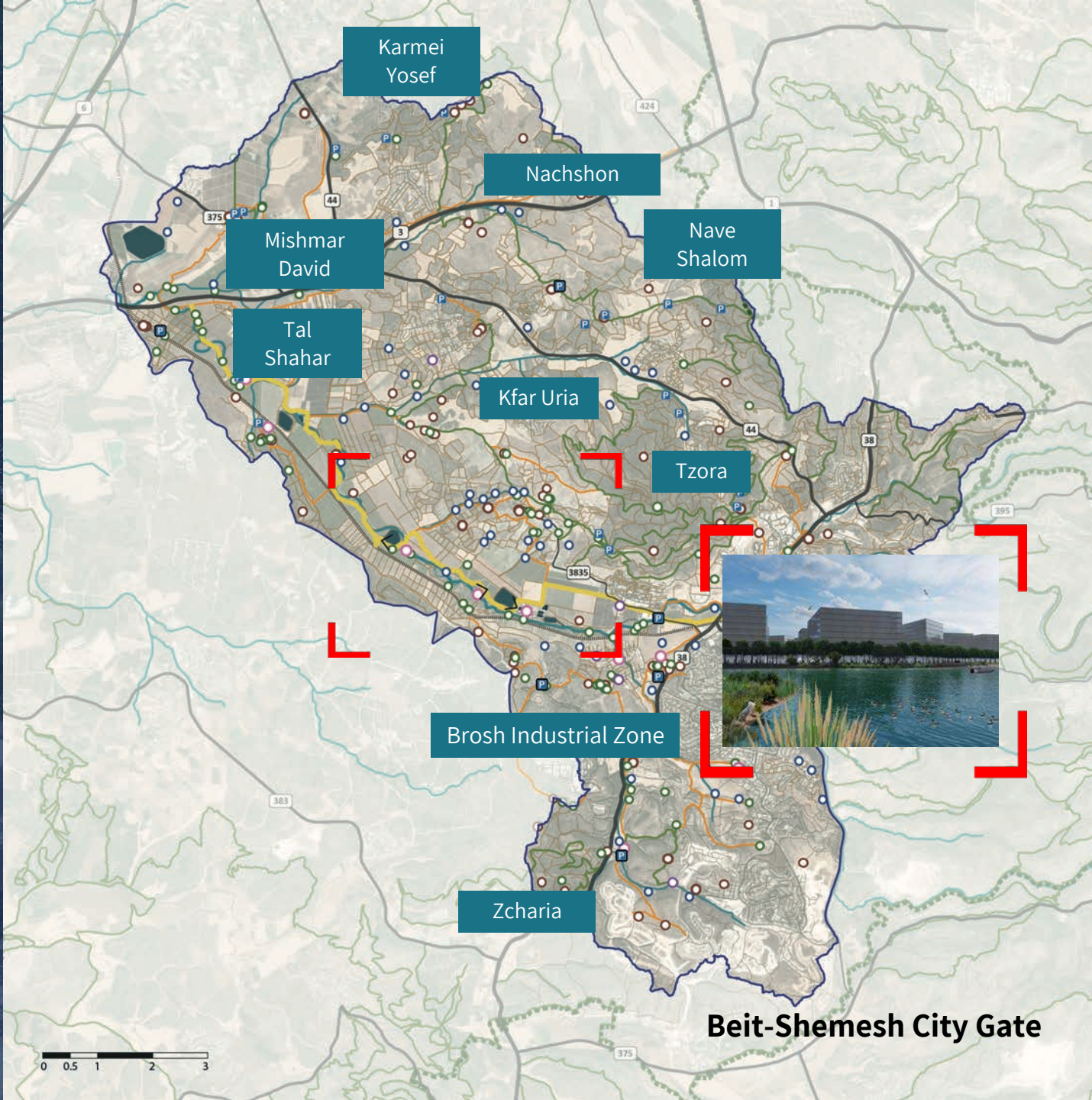
MINING



INFRASTRUCTURE

TIME IS NOT ON OUR SIDE





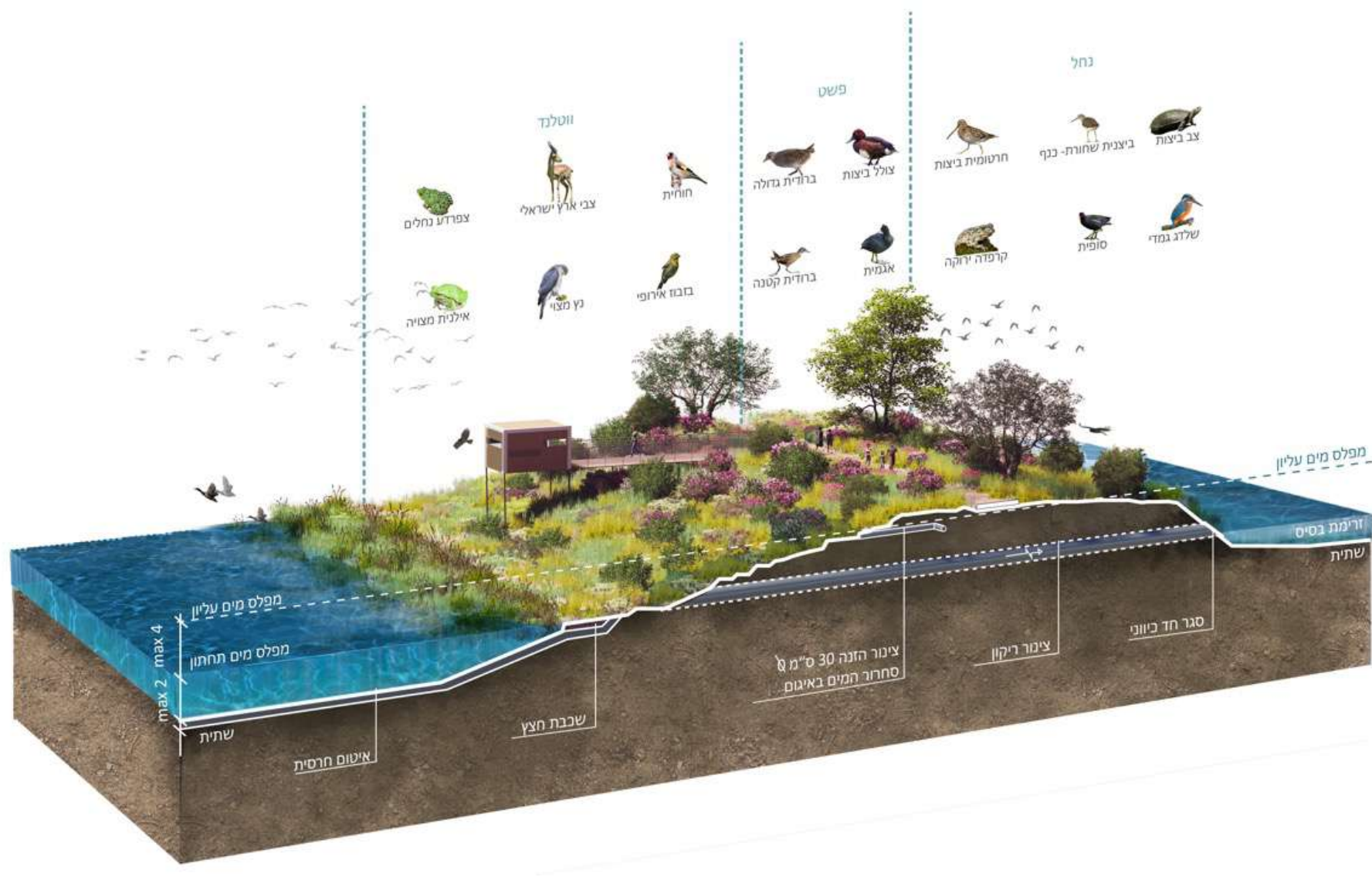


A Vision for future generations – a natural retreat to escape city life

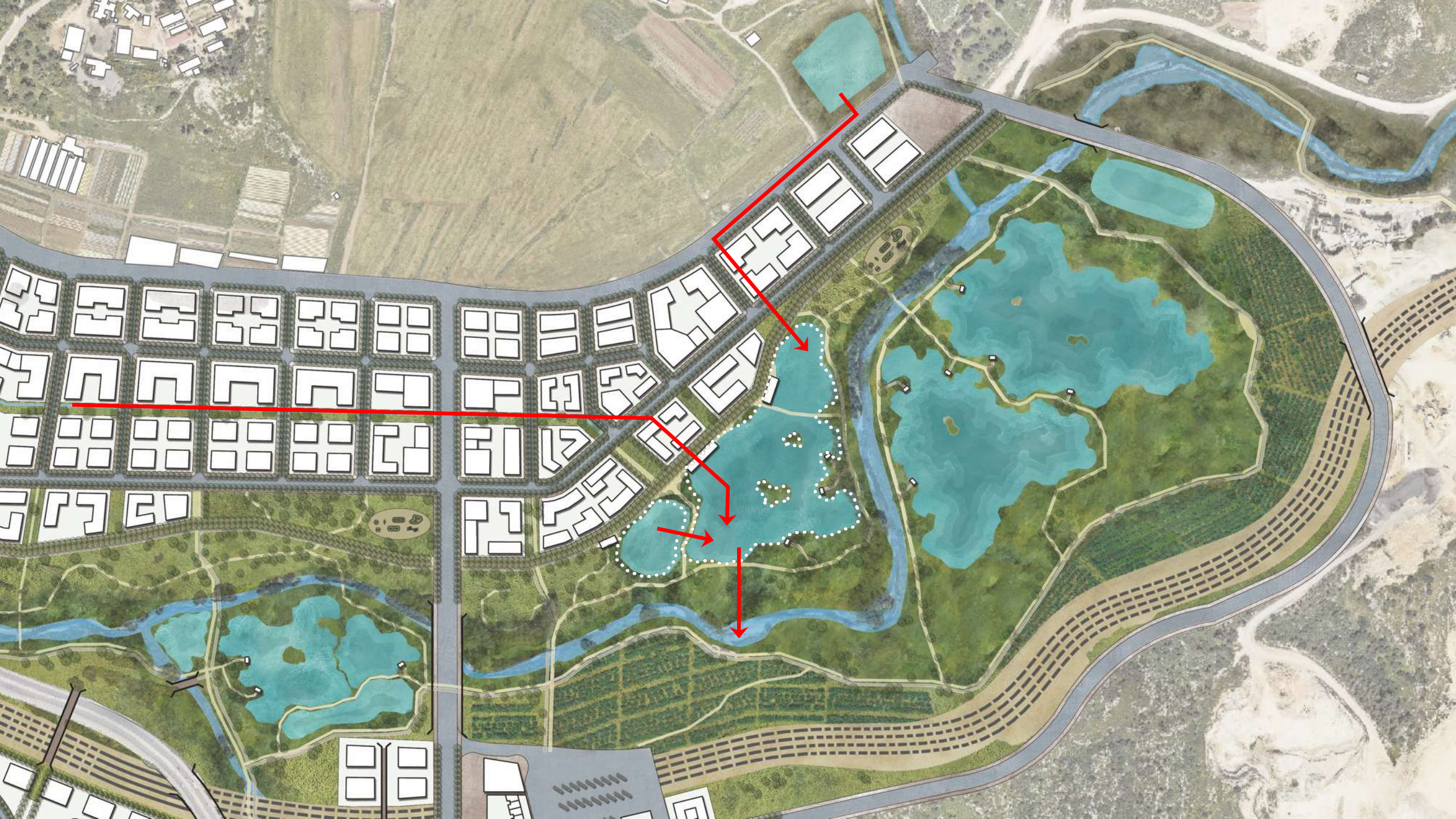


A Vision for The City of Beit Shemesh





This hydrological and ecological intervention enhances biodiversity, while preventing floods in the Beit Shemesh vicinity.

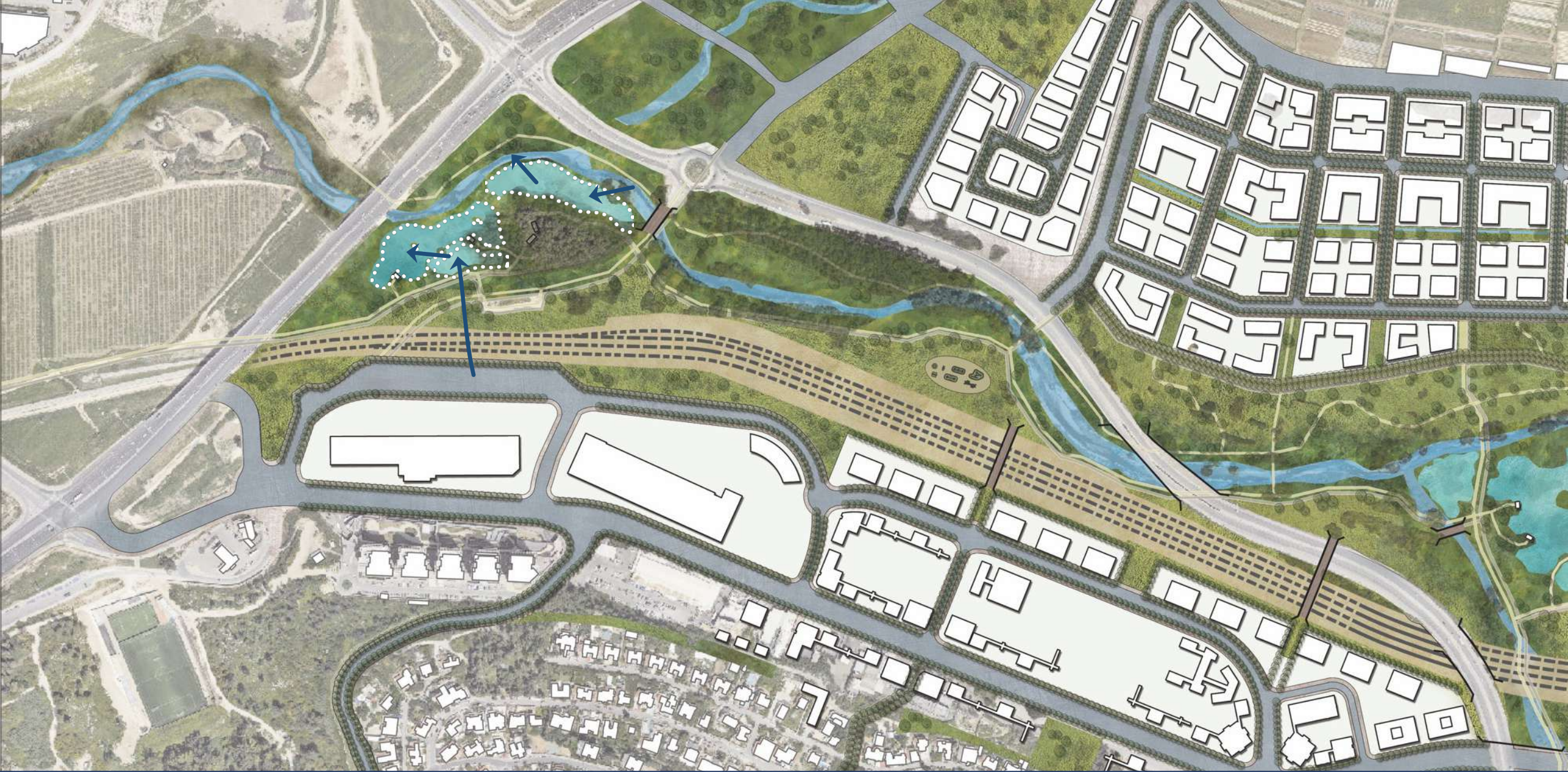


An architectural rendering of a modern urban park or walkway. The scene features a wide, paved path with a dark, textured surface. Large, mature trees with dense green foliage are planted along the path, casting shadows. A series of tall, dark, rectangular pillars supports a long, low, brown, slatted roof structure that runs parallel to the path. People are shown walking, cycling, and sitting on the path, suggesting a lively public space. In the background, a river flows, and a small boat is visible. The overall atmosphere is one of a well-designed, green urban environment.

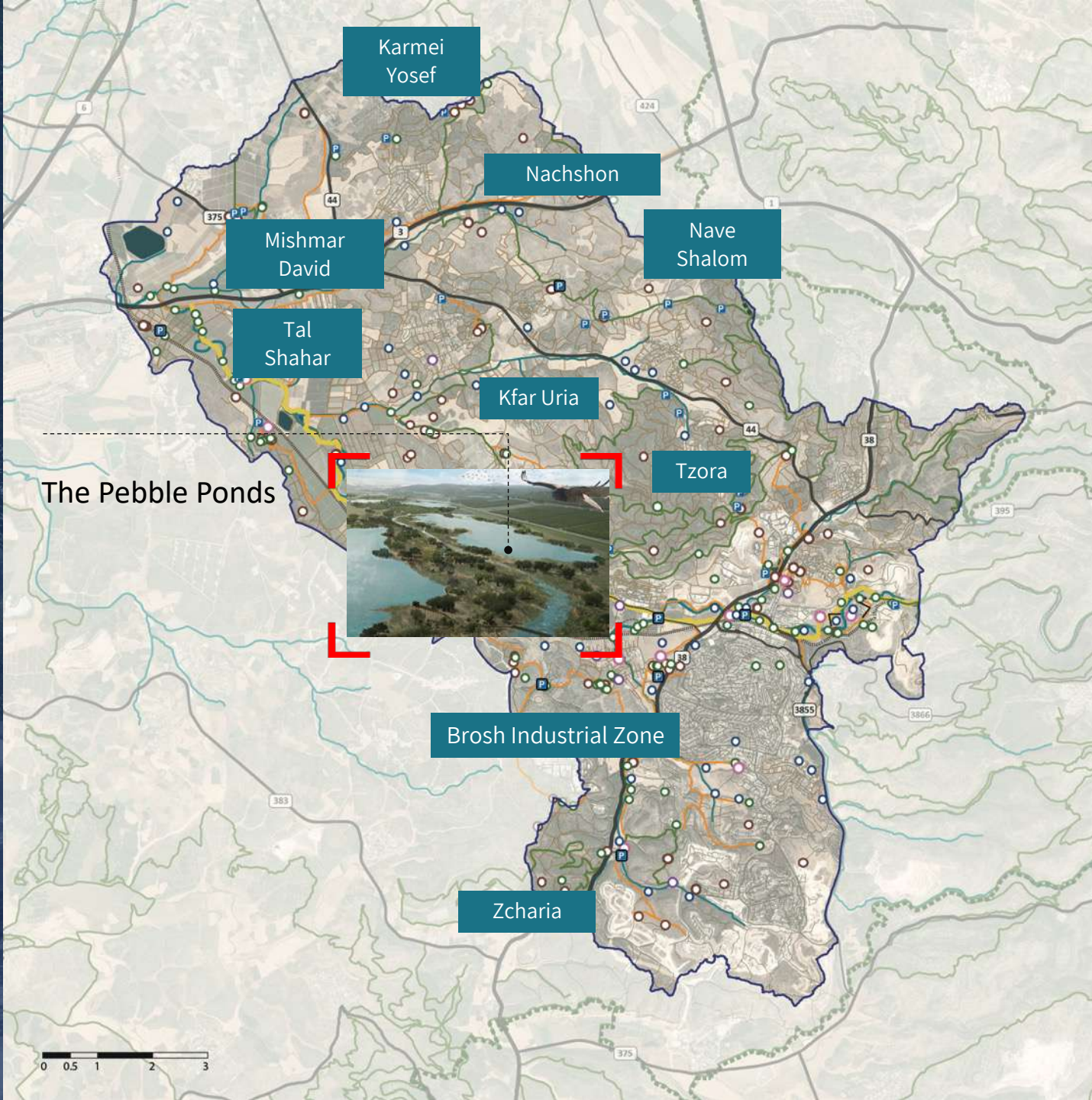
An urban Haven that protects the
river from untreated urban runoff







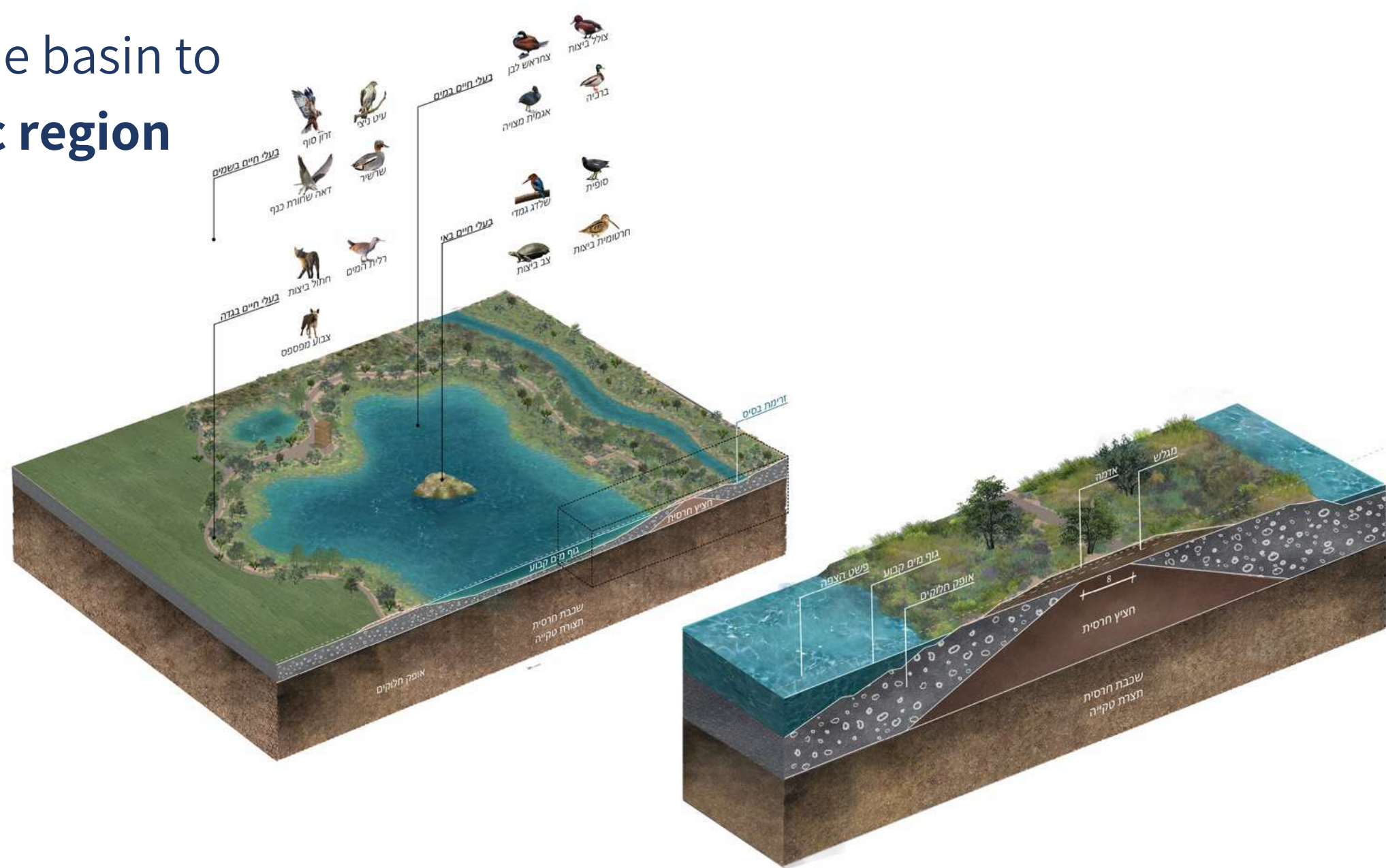
A Visitors / Educational Center – Here is where we begin with the community







We will transform the valley and the basin to a biospheric region



a powerful
icon of
nature in an
agricultural
context





Imagine the Hula Reserve,
in the heart of Israel



SOREK RIVER TEAM

Sorek Lahish Drainage Authority:

Chair Danny Moravia, CEO Shalom Yifrach, Eng. Boaz Cohen

Team Leader, StudioUrbanof:

Leor Lovinger

Project Management:

E.D. Rahat Engineering Coordination and Management

Landscape Architecture:

Studio Urbanof, Leor Lovinger, Carmel Merhav

Community & Public Participation:

Dr. Ahuva Windsor

Environmental Education Programs and Reachout Greenstep,

Nadav Gopher

Ecology:

The Nature Protection Agency, Amir Balaban

Eco Hydrology & Spatial Planning:

Uri Moran

Tourism:

Dr. Shahar Shilo

Financial Consulting

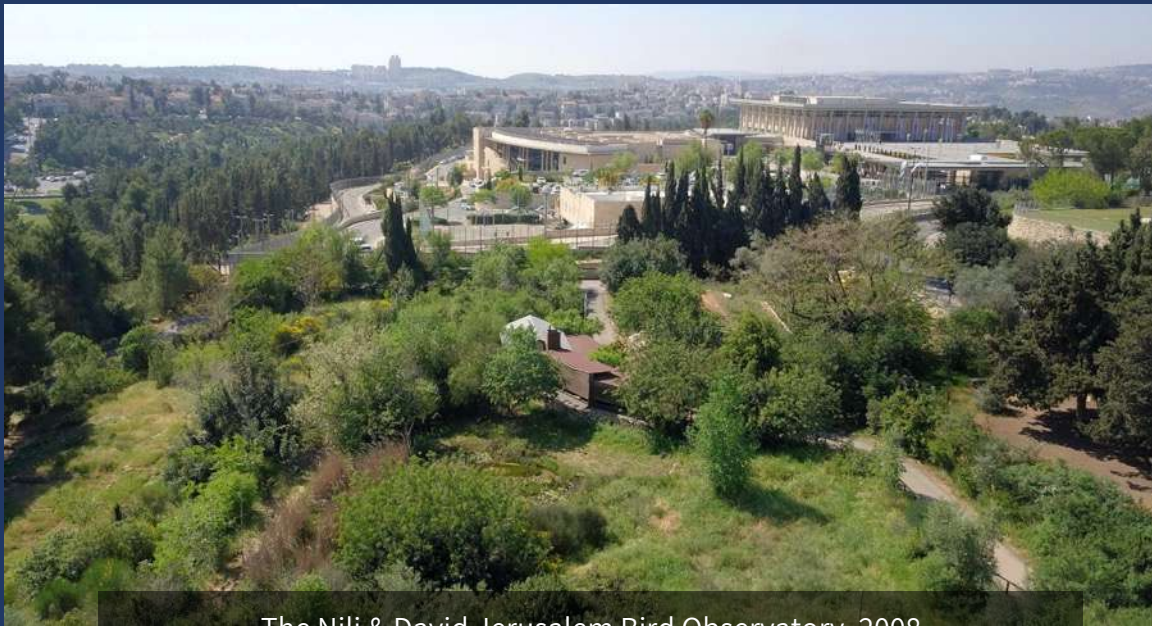
Gady Rozental

Social & Economic Surveying:

Ran Raviv

Urban Sustainability:

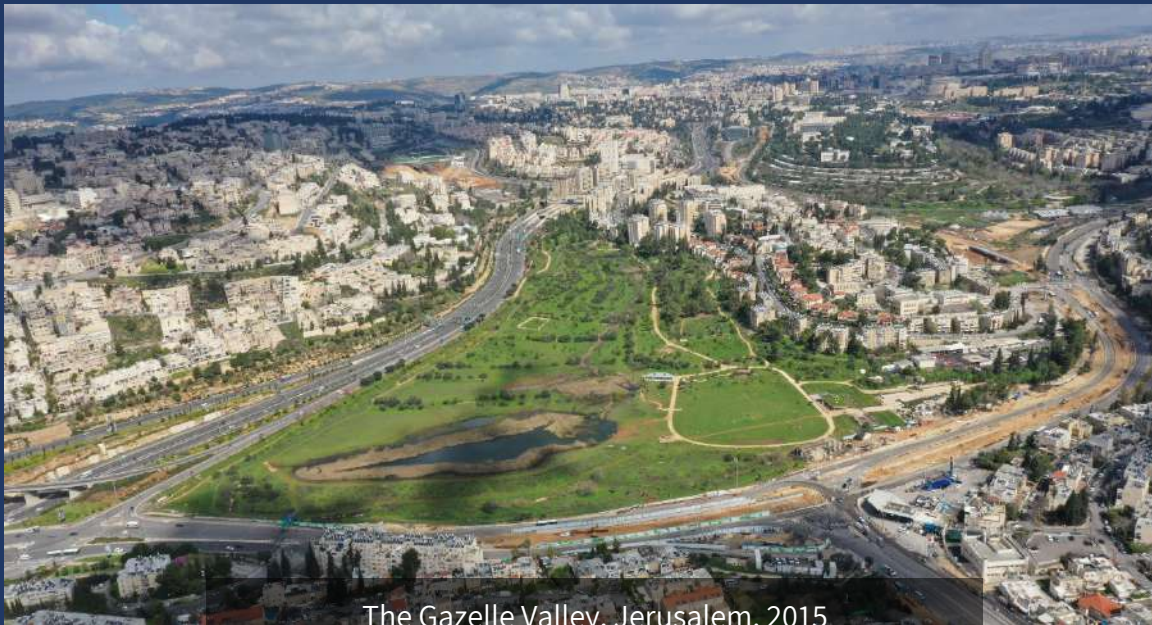
Dr. Orly Ronen



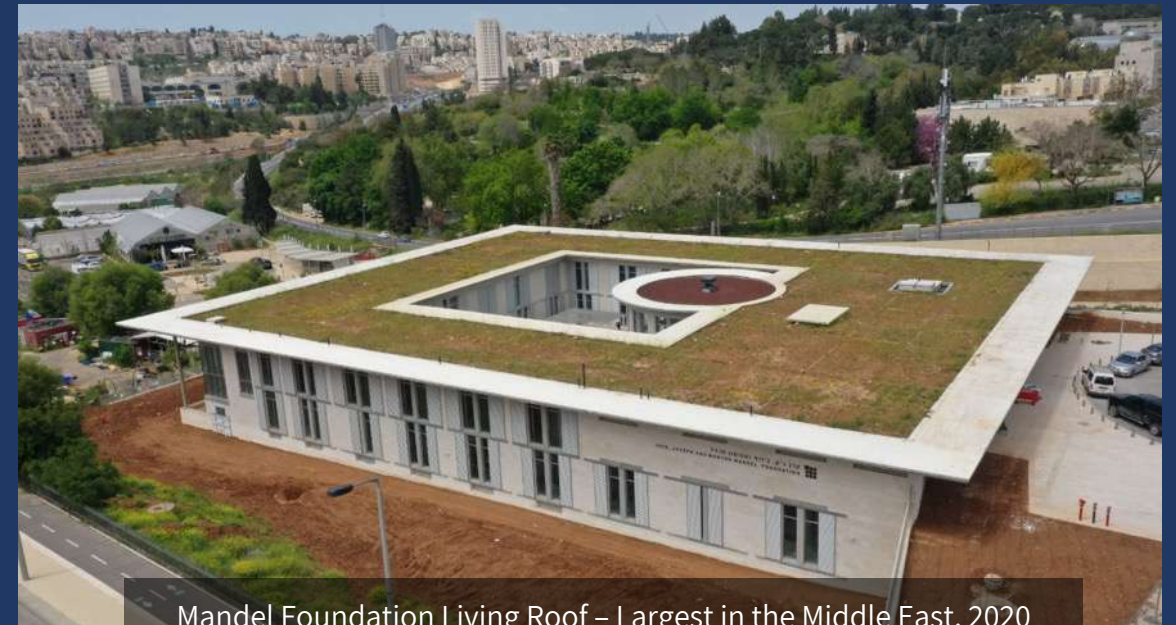
The Nili & David Jerusalem Bird Observatory, 2008



Agmon Hefer, Emek Hefer Valley, 2017



The Gazelle Valley, Jerusalem, 2015



Mandel Foundation Living Roof – Largest in the Middle East, 2020

Partnerships and Funding

Israel Land Authority:
Public Land Fund

Sorek Lahish Drainage Authority:
Out of pocket

Ministry of Agriculture :
Support urban resilience downhill

National Water Authority:
Support Reservoir to recharge the aquifer

KKL—JNF :
NP 22

Israel Nature and Parks Authority:
Support the ecological corridors

Ministry of Environmental Protection:
Support Ecological Design & Biodiversity

Ministry of Housing & Israel Land Authority:
Studio Urbanof, Leor Lovinger, Carmel Merhav



An aerial photograph of a vast wetland or marsh area, featuring winding waterways, dense clusters of trees, and open grassy fields. In the upper right corner, a large bird, possibly a pelican, is shown in flight with its wings spread wide. A flock of smaller birds is also visible in the sky above the landscape. The entire image is overlaid with a semi-transparent dark blue filter.

THANK YOU!