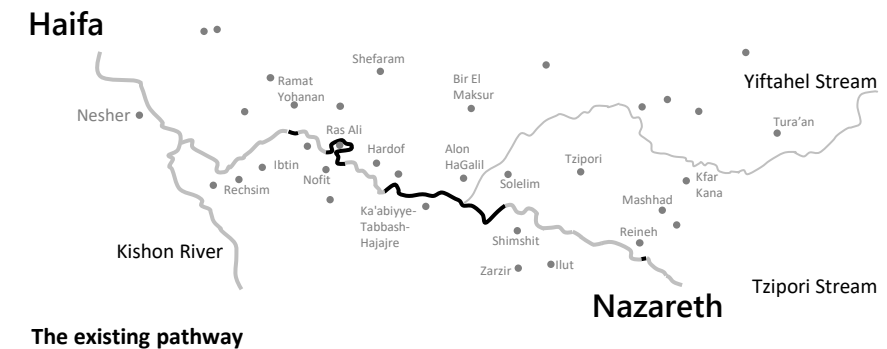


Nahal Tzipori

وادي الملك

נחל ציפורי

The Tzipori Pathway



נחל ציפורי וادي الملك NAHAL TZIPORI

The Essence



The pathway near moshav Alon HaGalil

The Essence



The pathway near moshav Alon HaGalil

“I heal the stream and the stream heals me”



We want to rehabilitate
the Tzipori stream
so that in return-
the Tzipori stream
will heal and empower
our communities

Our Partners



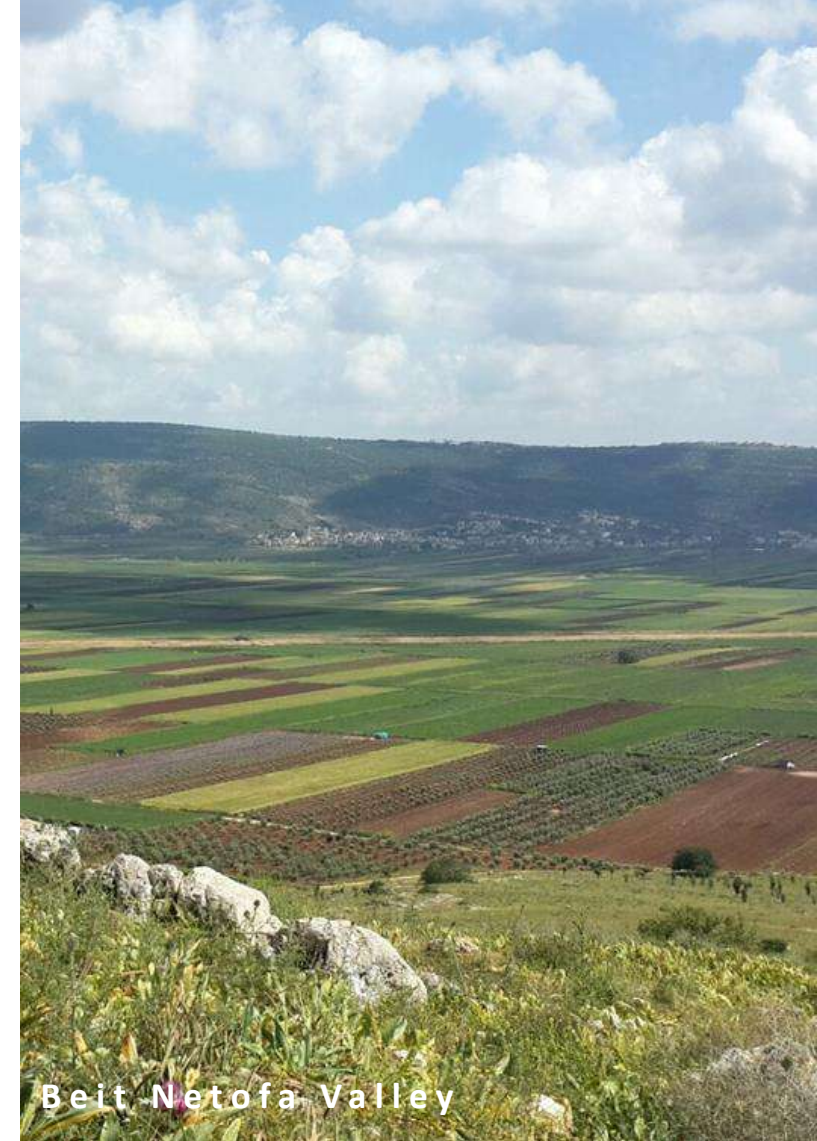
The Kishon Drainage and River Authority



The Kishon Meander Hills Park



Kfar Baruch Reservoir



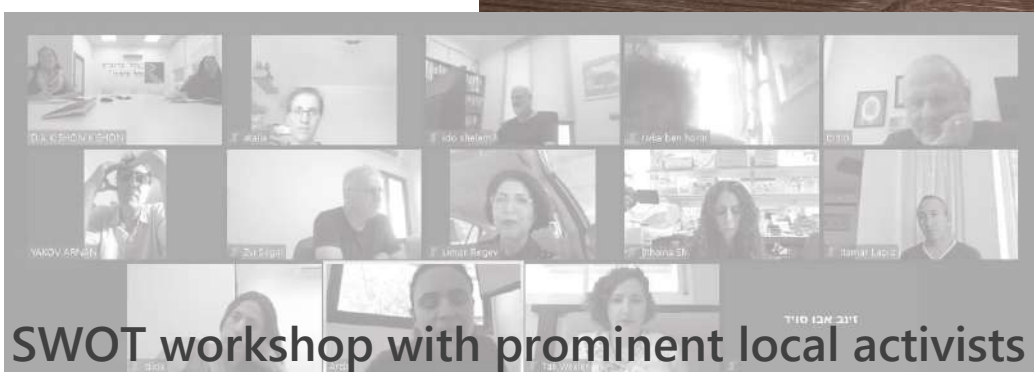
Beit Netofa Valley



Innovation Workshop with local experts



Recruiting the water and sewage corporations

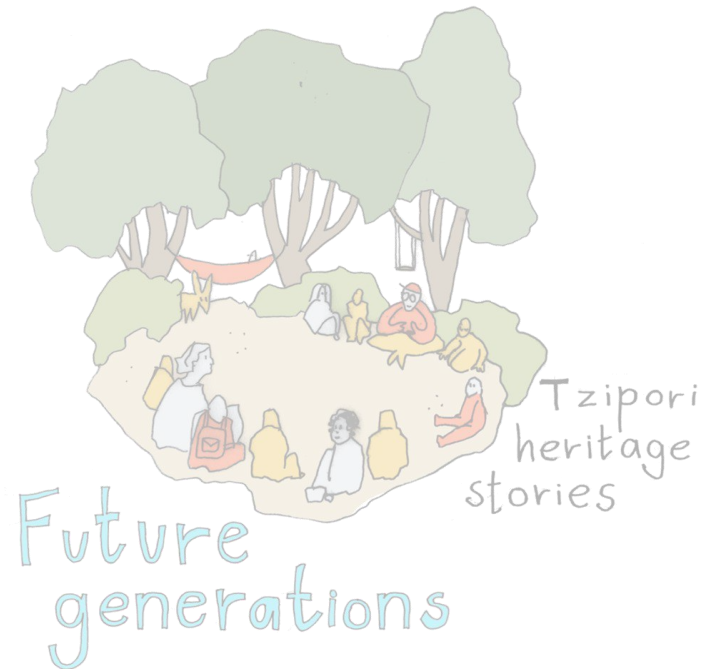
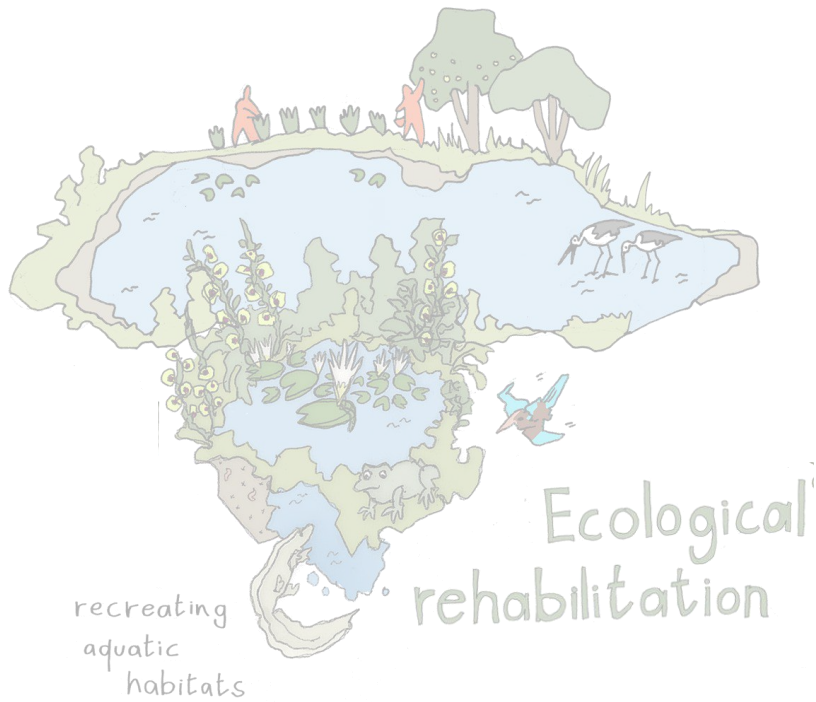


SWOT workshop with prominent local activists

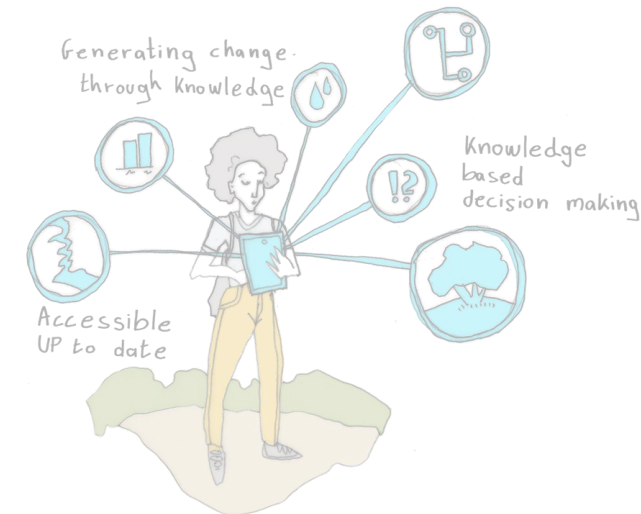


The industrial area in Haifa bay

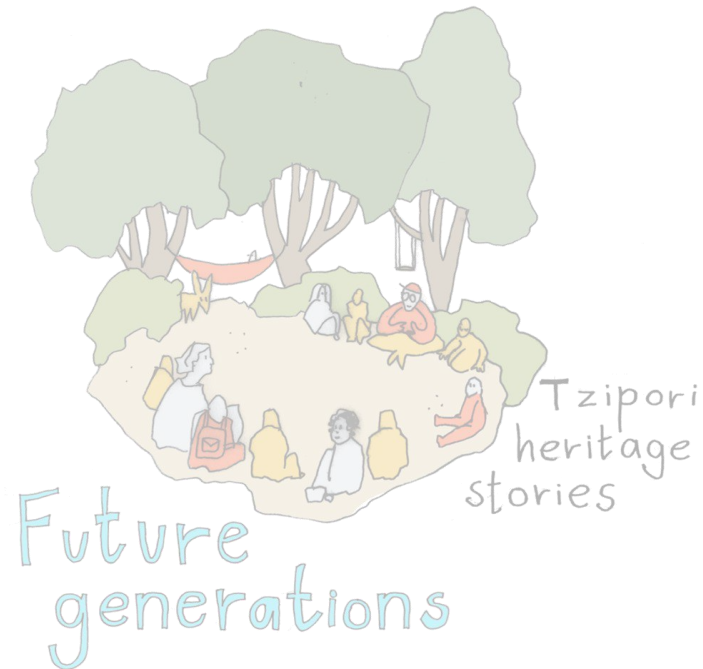
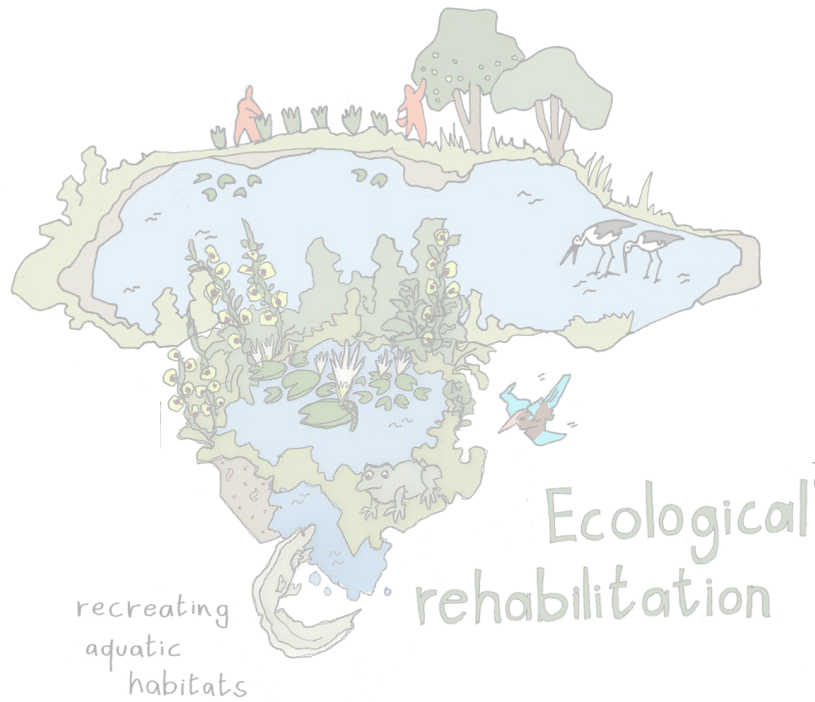
Action Plan



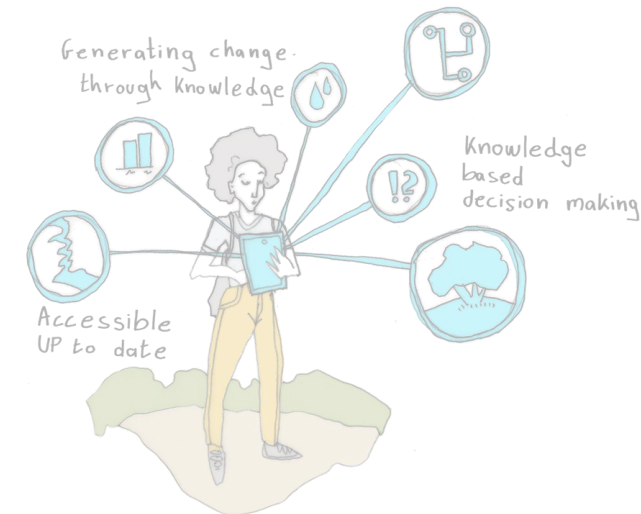
Knowledge and information



Action Plan - A Resilient Basin



Knowledge and information



Action Plan

Rehabilitate the Environment



Action Plan

Rehabilitate the
Environment



Empower
Communities



Action Plan

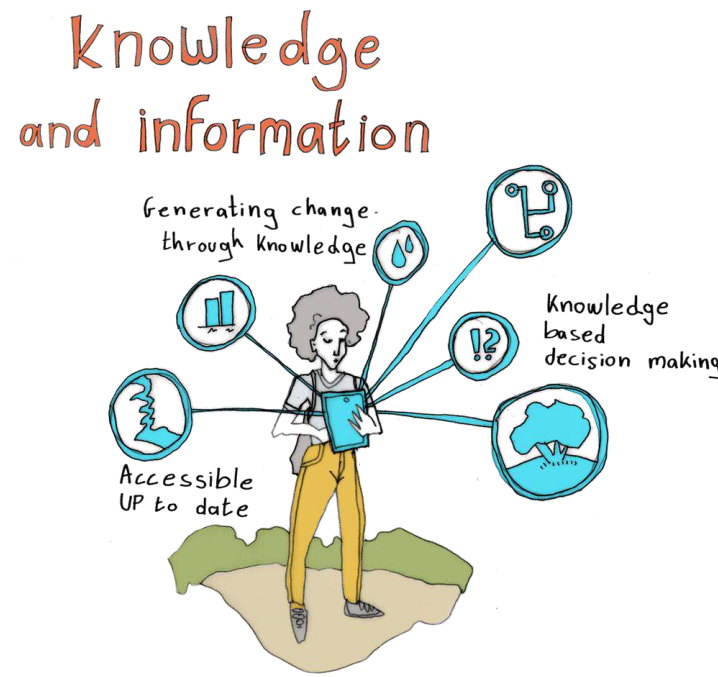
Rehabilitate the
Environment



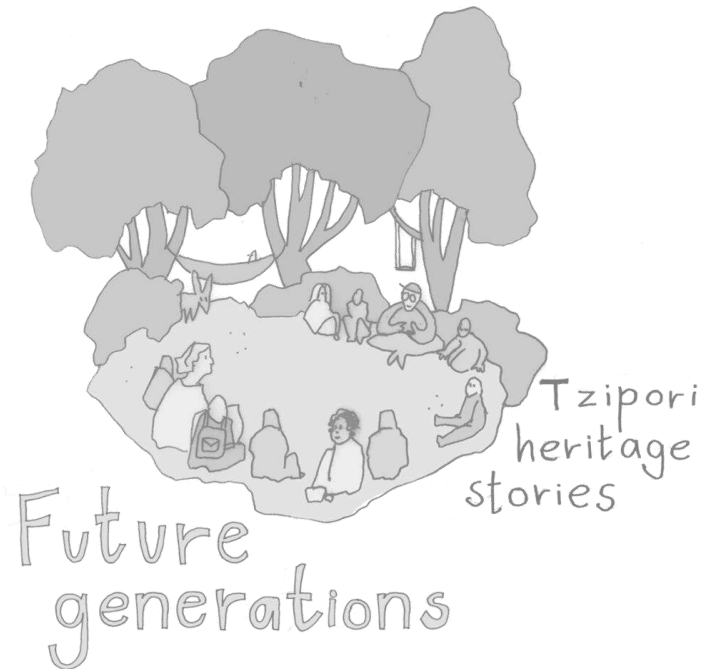
Empower
Communities



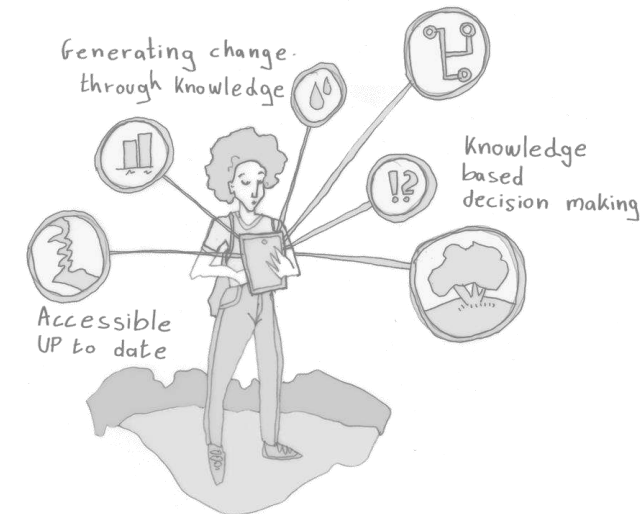
Create a
Model



Rehabilitate the Environment



Knowledge and information



Pollution and floods



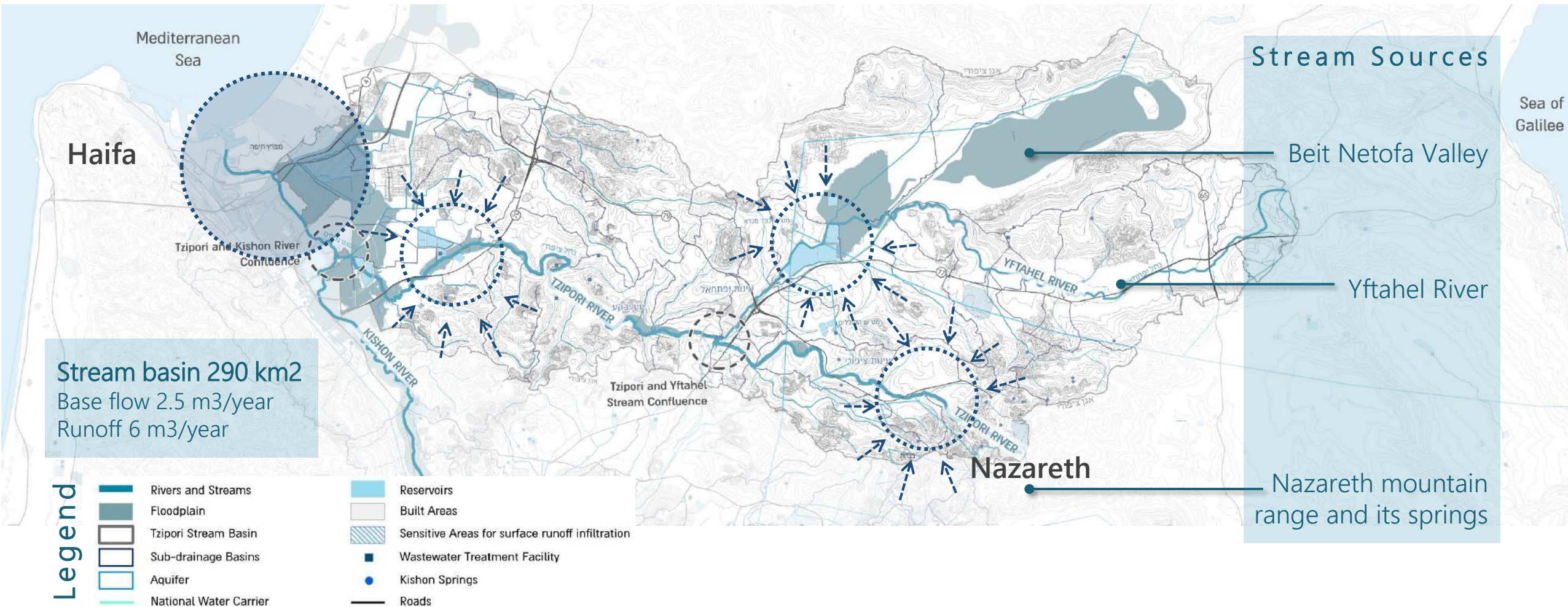
The stream is polluted with garbage and sewage



severe floods in Haifa's bay area

Protect Haifa Bay

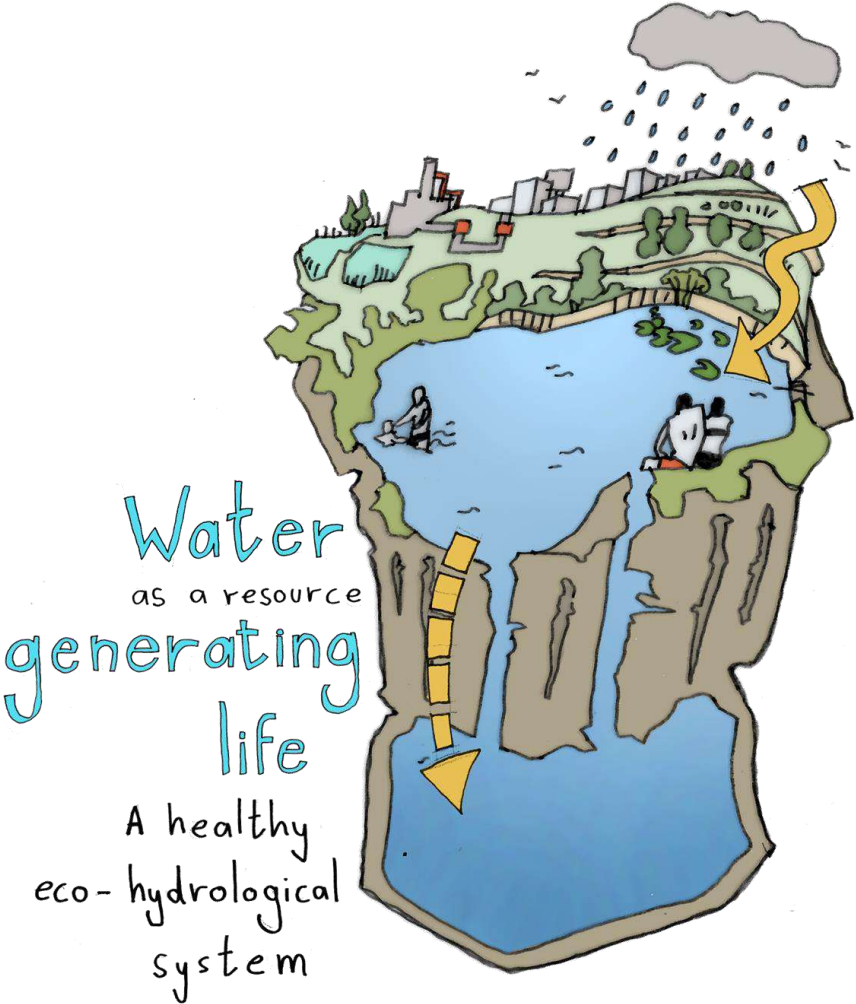
Create a system of natural flood areas upstream to prevent the floods downstream



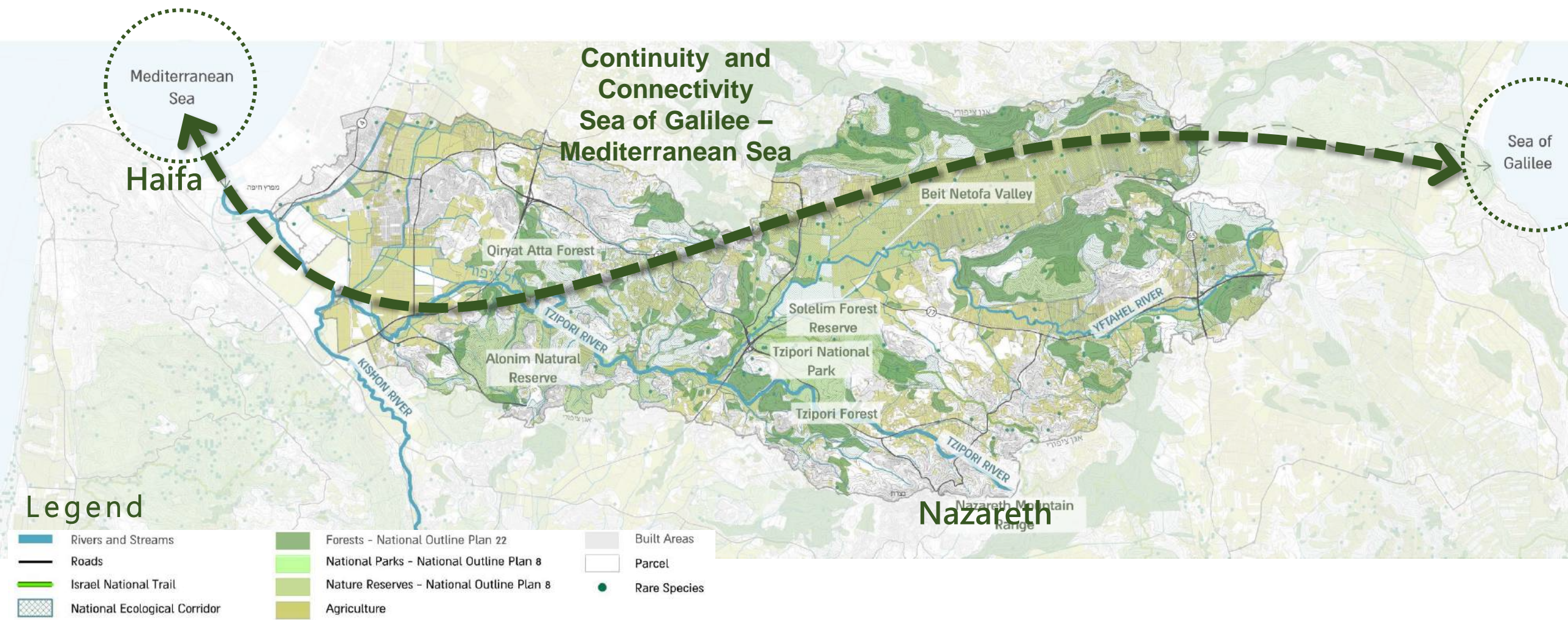


Clean Clear Water

Rehabilitate the Springs and Aquatic Habitats



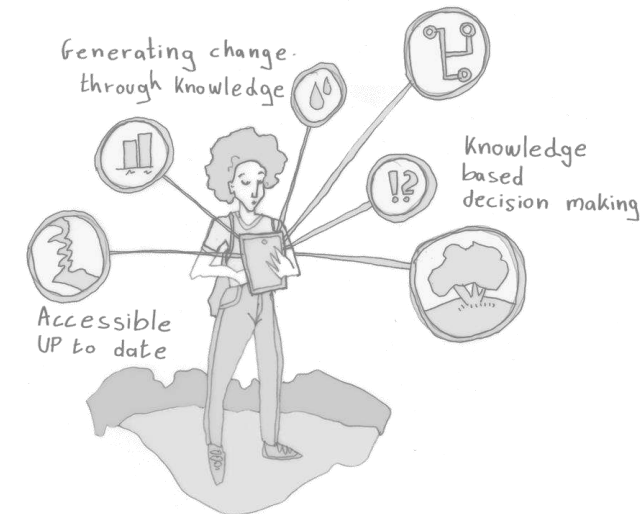
National Ecological Corridor



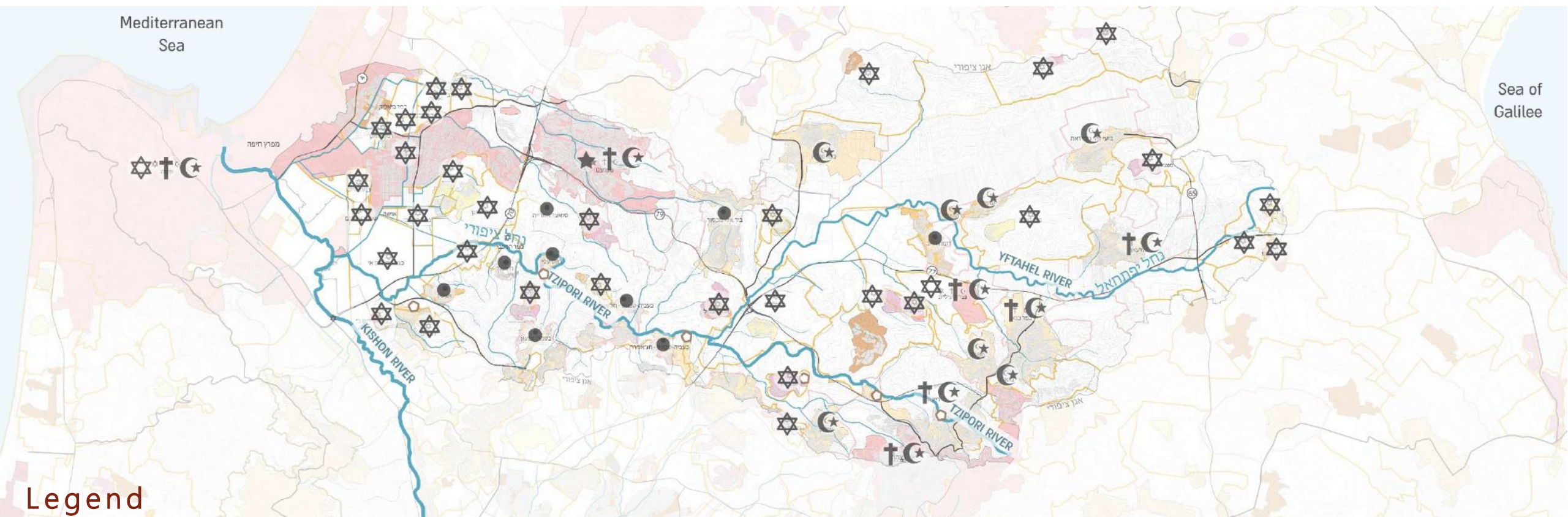
Empower Communities



Knowledge
and information



Diverse Communities



Legend

- | | | | |
|-----------------------------------|----------------------|-------------------------------|---------------|
| Rivers and Streams | Settlement | City | Sector |
| Roads | Kibbutz | Regional Council Jurisdiction | Jewish |
| Built Areas | Moshav | | Arab |
| Public Facilities near the stream | Community Settlement | | Bedouin |
| | Village | | Druze |



Future
neighborhood

Expanding urban
development

The Paradox

The Arab city of Reineh



Connect their Past with their Future

Pupils from Ka'abiyye-Tabbash-Hajajre
in Hermits' mill

Urban Façade to the Stream



Rehabilitate and develop Bir A-Tahtani spring



Current façade to the stream - Reineh

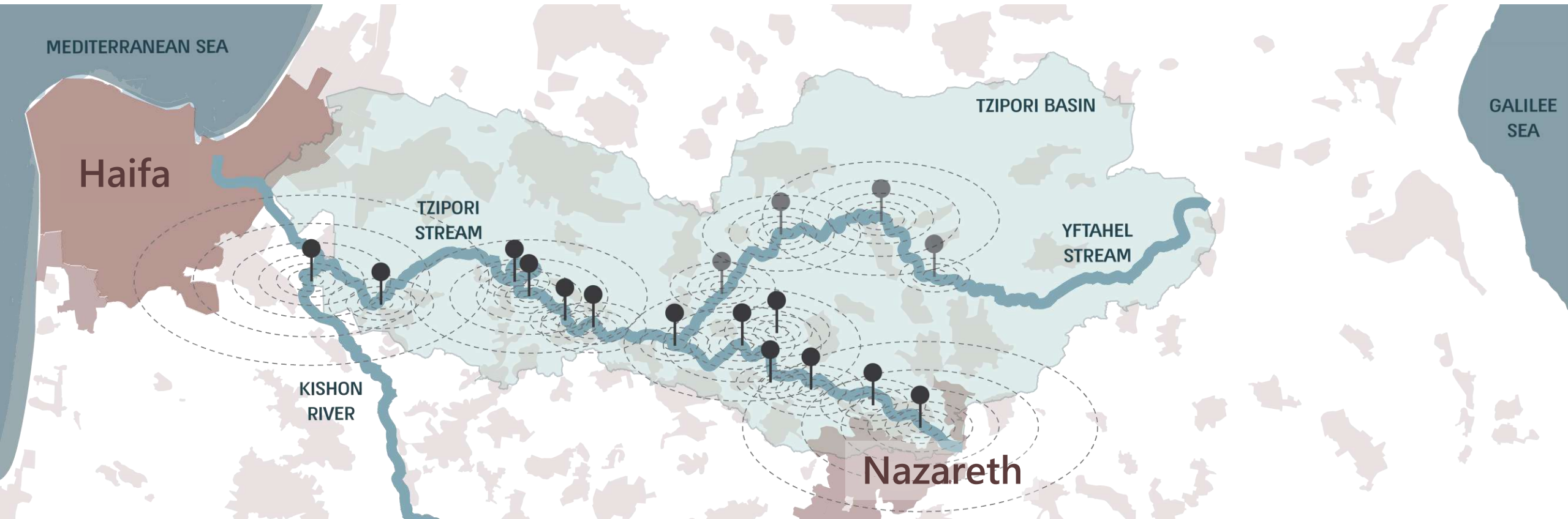
Empower Communities



Local Sustainable Economy

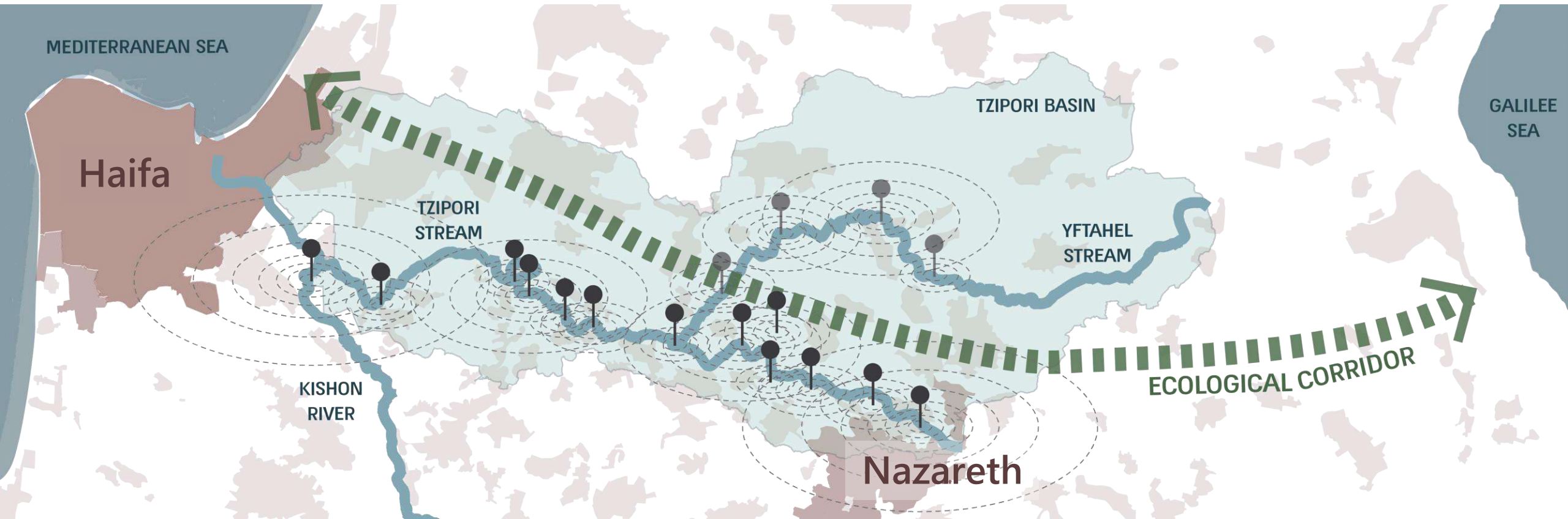


Regional and National Role



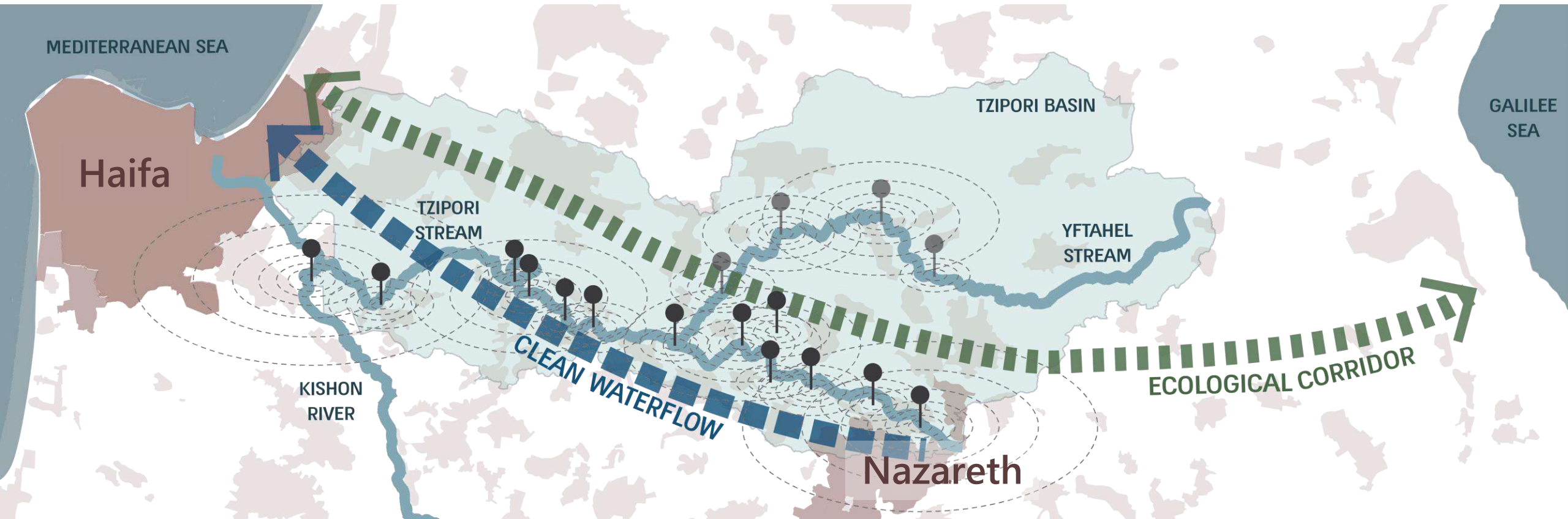
The stream has a **social**, **ecological** and **hydrological** role in the Local, Regional and National scale

Regional and National Role



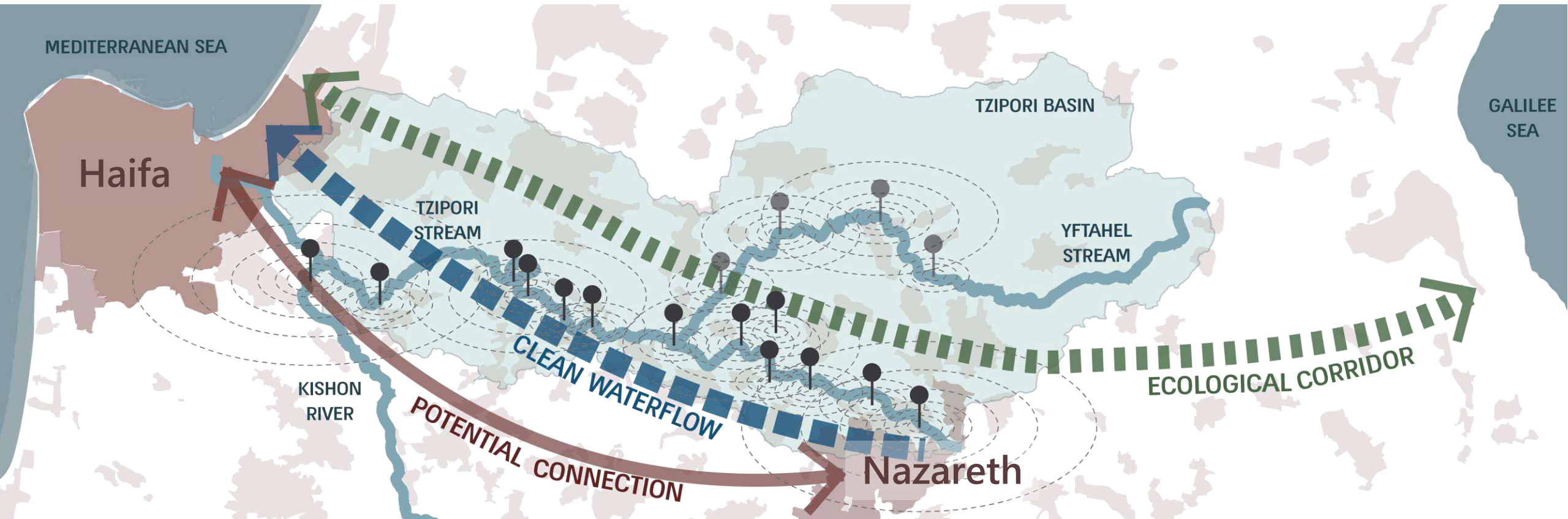
The stream has a **social**, **ecological** and **hydrological** role in the Local, Regional and National scale

Regional and National Role



The stream has a **social**, **ecological** and **hydrological** role in the Local, Regional and National scale

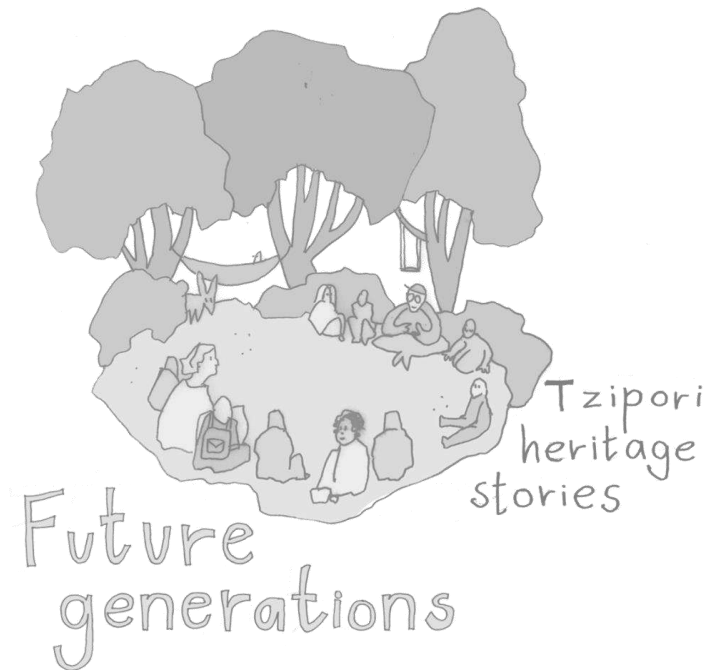
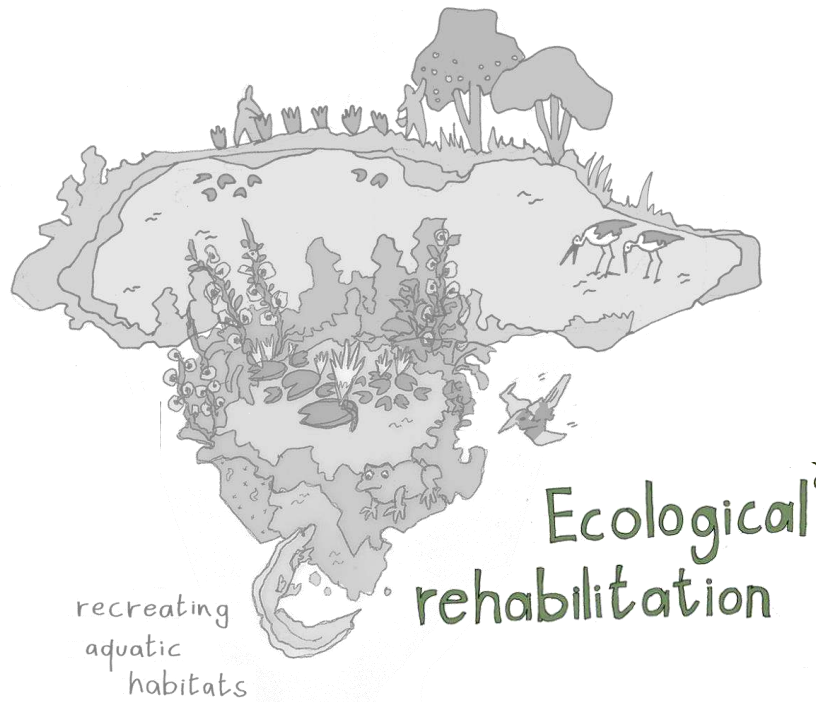
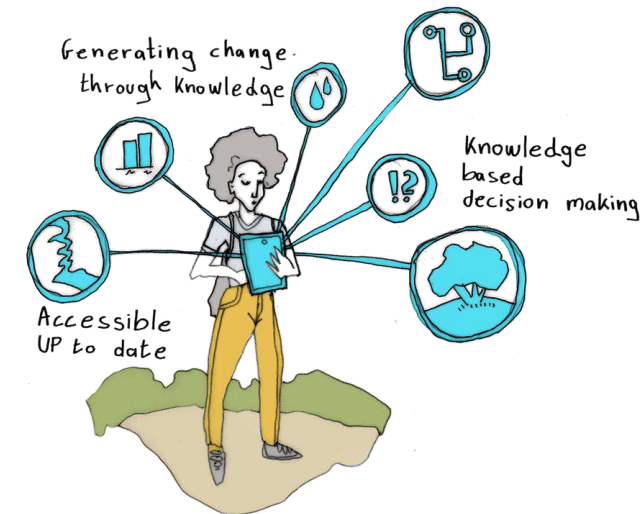
Regional and National Role



The stream has a **social**, **ecological** and **hydrological** role in the Local, Regional and National scale

Create a Model

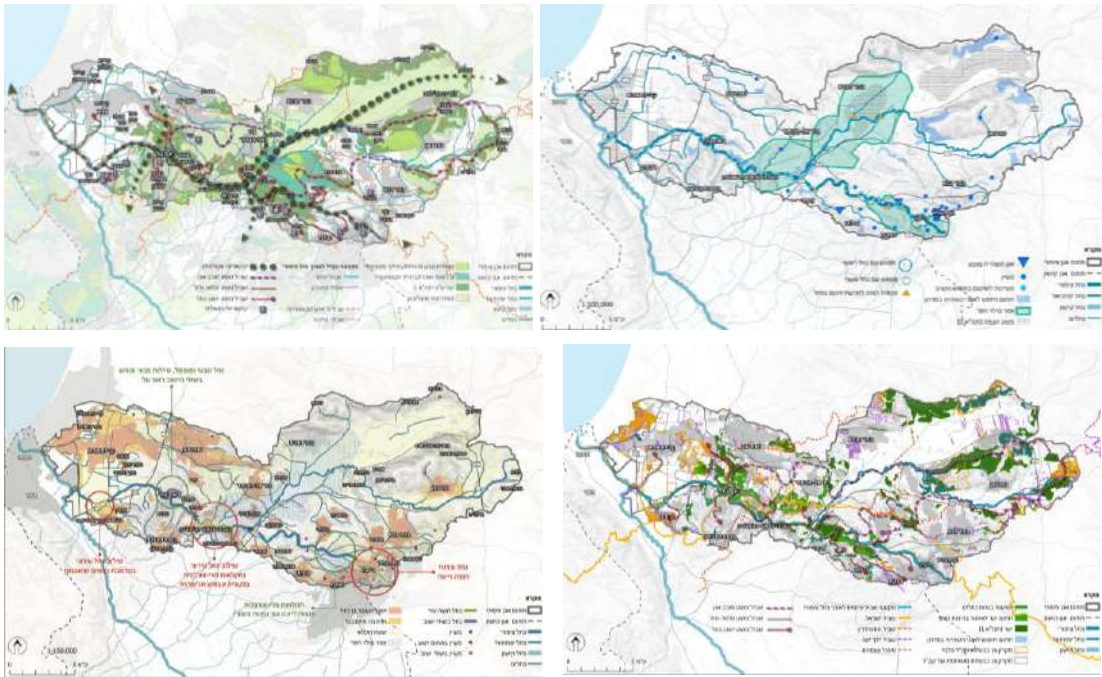
Knowledge and information



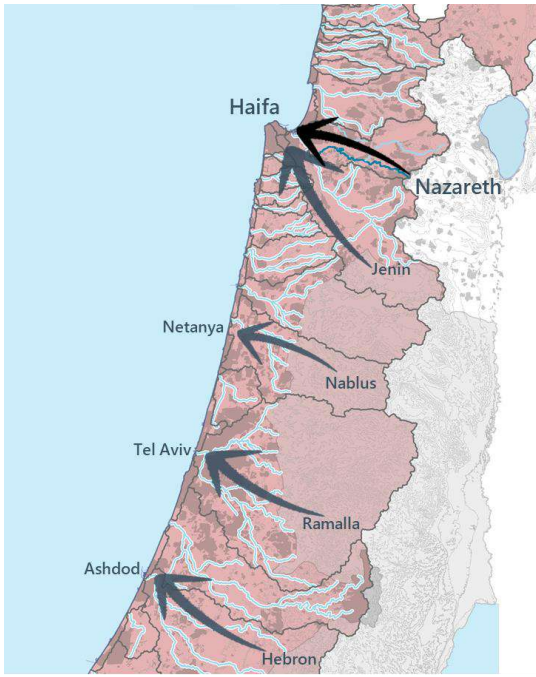
A scalable Model



Local



Basin

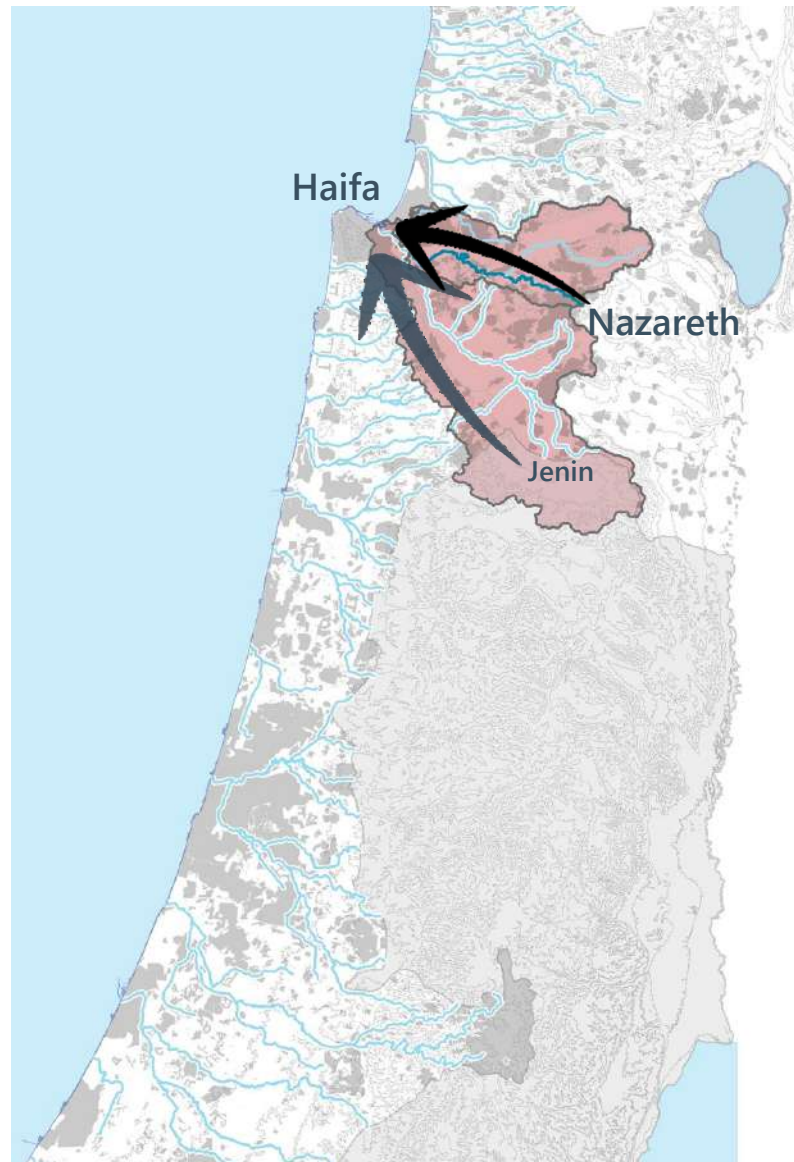


National

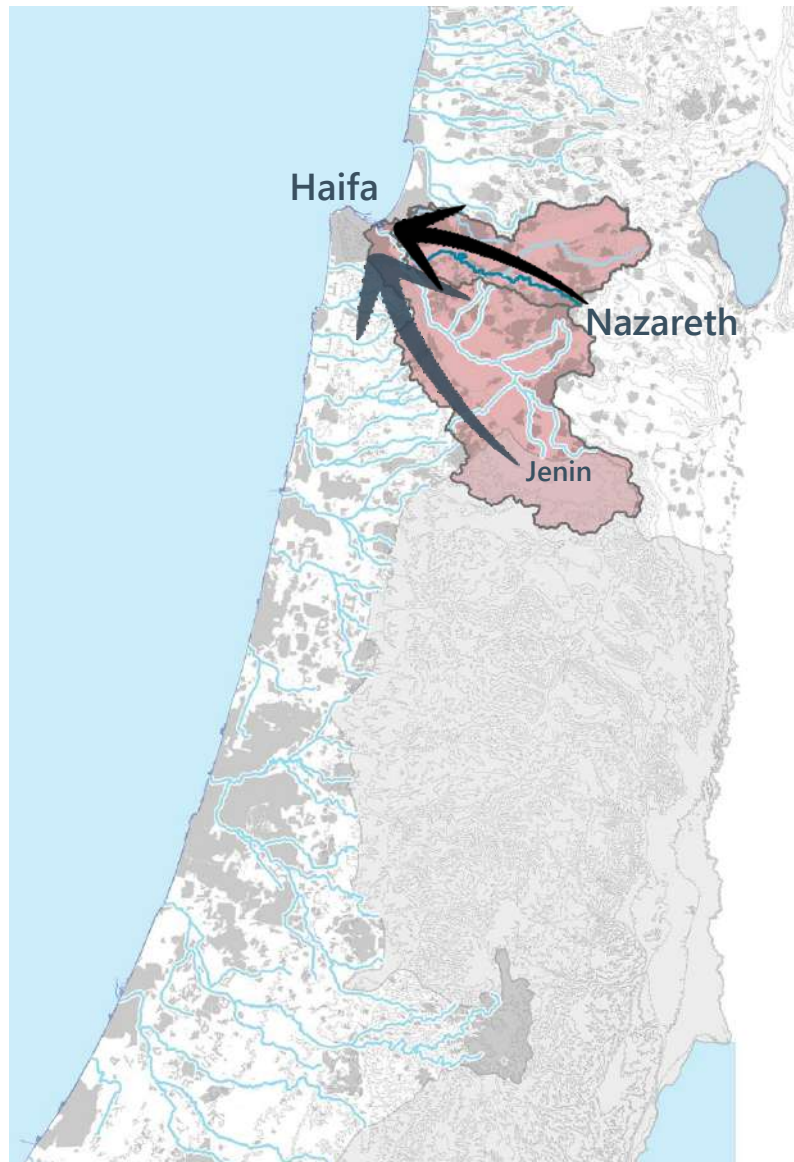
Applies to All Coastal Streams



Applies to All Coastal Streams



Applies to All Coastal Streams

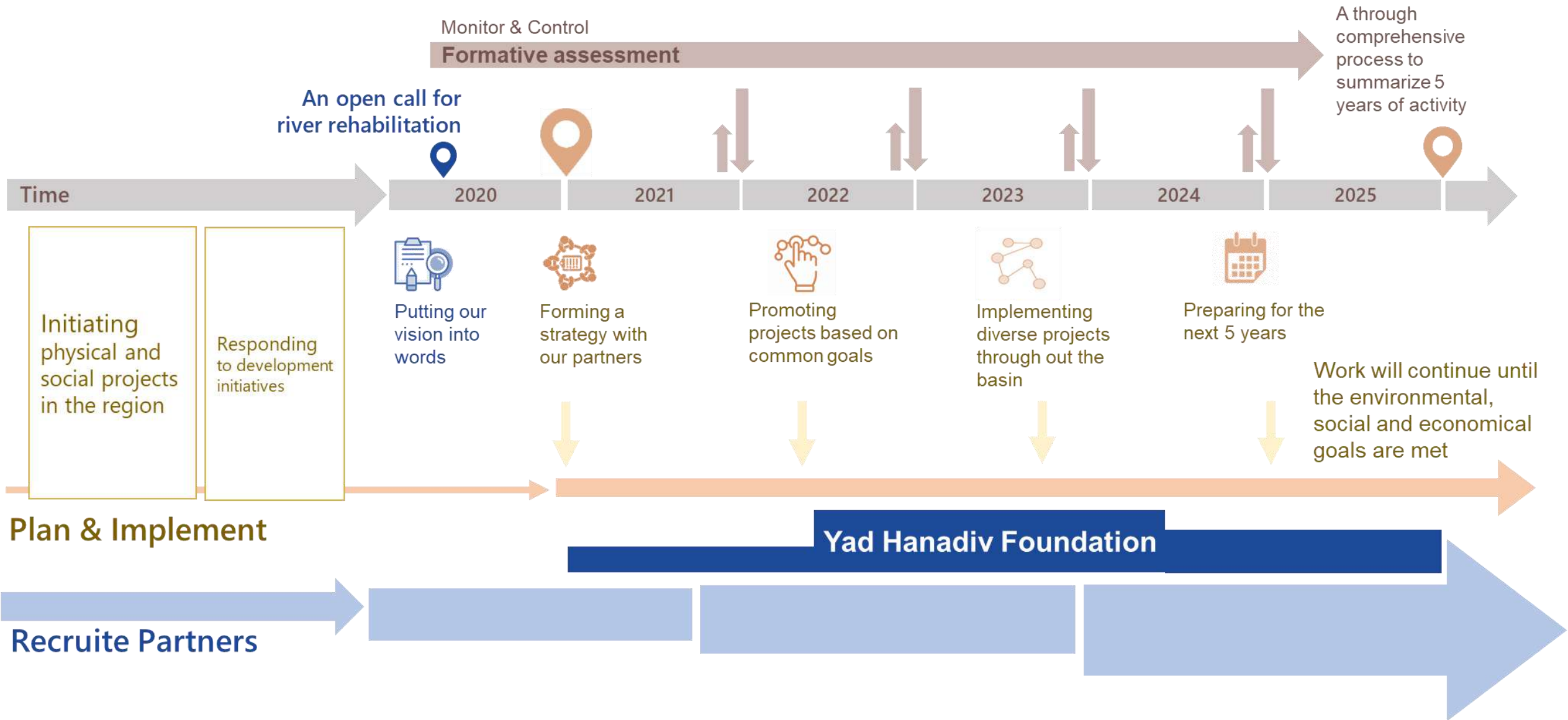


Share Our Knowledge



International Congress, Tel-Aviv 2019: Mediterranean Skylines and Floodplains: Cities & Nature

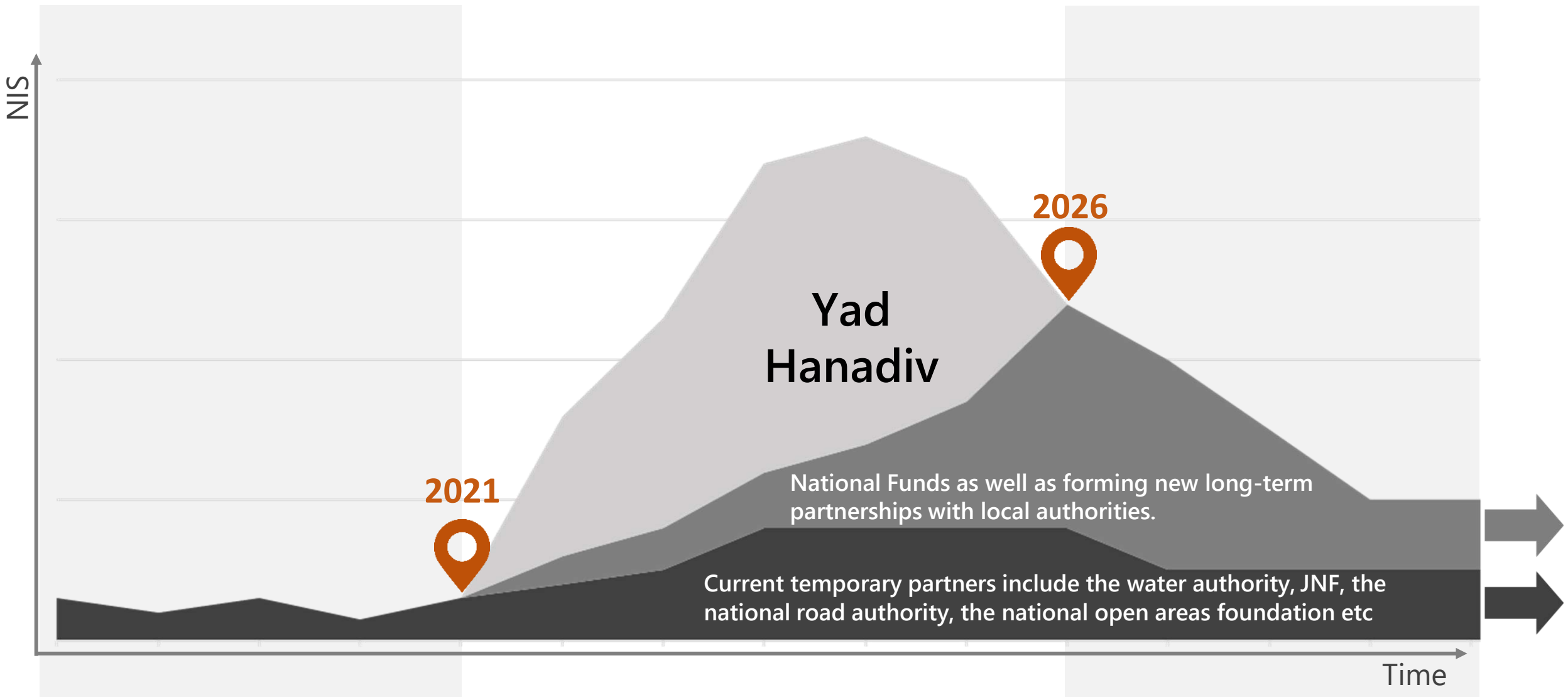
Work in Multiple Routes and Scales Simultaneously



Working and Making Decisions Together



The Long-Term Affect of Yad Hanadiv's Partnership



Financial Benefits

The estimated value of the economic benefits created by our suggested action plan is **380 million NIS per year.**

Benefits	Estimated Value (NIS)
Conservation and development of ecosystem services	103
Groundwater recharge	5
Extending the flow of the stream	3
Prevention of flood damage	80
Tourism and stay on site	36
Residential proximity to stream and project (increase in value of dwellings)	154
Business development and employment	1
Savings due to social projects and activities	1
Total	383



Nahal Tzipori as a Generator

Local, National and International Affect



Nazareth Metropolitan area

Local, National and International Affect



Reclaim the Stream



The Tzipori pathway



The Challenge

The river crosses the
beduin village of Ka'abye

נחל ציפורי وادي الملك Nahal Tzipori

Knowledge
and information



Sustainable
Local economy



Planning
Implementation
Maintenance

Active civic
Involvement
Multi-sector
Partnership

Future
generations



A committed
local leadership



Ecological
rehabilitation

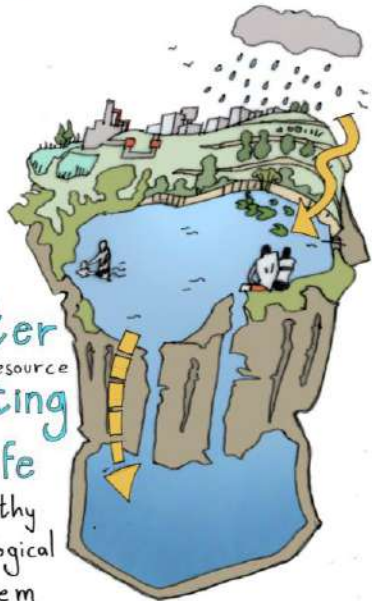
recreating
aquatic
habitats

Continuity and
connectivity

Ecological
corridor



Water
as a resource
generating
life
A healthy
eco-hydrological
system





Nahal Tzipori

وادي الملك

נחל ציפורי

Thank You